

The information on the [Erudus System](#) has been supplied by the manufacturers of the products and, whilst the owners of the Erudus System take steps to ensure the information is regularly updated, they give no warranty and no guarantee that the information is accurate. Product information and ingredients may change, please always read product labels carefully in addition to using the information provided by Erudus One.

We do not accept liability for any inaccuracies or incorrect information contained on this site. Please visit <http://www.erudus.com/terms-and-conditions> for full terms and conditions.

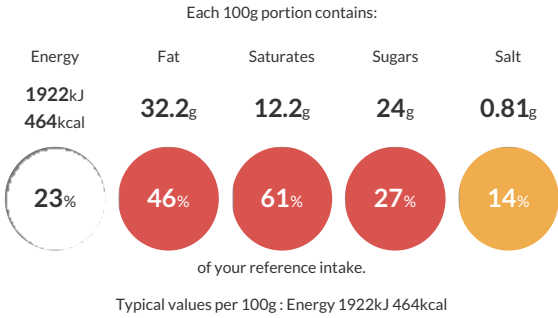
1048 Chocolate & Salted Caramel Slice (Pre-cut 15 Portion)

Short Product Name:
Chocolate & Salted Caramel Slice

A crunchy chocolate biscuit base, topped with layers of caramel and white chocolate truffle, caramel sponge, salted caramel sauce and cream fond, decorated with milk chocolate shavings, caramel chocolate chips and salted caramel sauce.

Traded Unit GTIN: 5060622440047 Internal GTIN: Supplier : Eatons Patisserie Suppliers Product Code : 1048

Reference Intake



Nutritional Information

Typical Values	Per 100g
Energy	1922kJ 464kCal
Carbohydrates	37.3g
of which sugars	24g
Fat	32.2g
of which saturates	12.2g
Fibre	0.9g
Protein	5.8g
Salt	0.81g

Allergy Information

Key: Contains May Contain


Contains Cereal/Gluten


Contains Milk


Contains Eggs


Does Not Contain Peanuts


May Contain Nuts


Does Not Contain Crustaceans


Does Not Contain Mustard


Does Not Contain Fish


Does Not Contain Lupin


Does Not Contain Sesame


Does Not Contain Celery


Contains Soya


Does Not Contain Molluscs


May Contain Sulphur Dioxide

Dietary Information

Key: Suitable for


May not be suitable for Vegetarian


May not be suitable for Vegan


May not be suitable for Kosher


May not be suitable for Halal


NO DATA for Coeliac

Ingredients

Cream (MILK), WHEAT Flour (With Calcium, Iron, Niacin, Thiamin), Wholemeal WHEAT Flour, Vegetable Shortening (Palm & Rapeseed Oil), Sugar, Partially Invert Sugar Syrup, Raising Agents (Sodium Bicarbonate, Ammonium Carbonate), Salt, White Chocolate (10%) [Sugar, Cocoa Butter, Whole MILK Powder, Emulsifier (SOYA Lecithin), Natural Vanilla Flavouring], Caramel Sauce (10%) [Sweetened Condensed MILK (MILK, Sugar), Golden Syrup (Partially Inverted Refiners Syrup), Glucose Syrup, Palm Kernel, Water, Unsalted Butter (MILK), Sugar, Palm Oil, Gelling Agent (Pectin E440), Emulsifiers (Sunflower, Rapeseed Lecithin E322, Sorbitan Tri-Stearate E492), Salt, Preservative (Potassium Sorbate E202)], Toffee Crème Cake Base (9%) [WHEAT Flour (With Calcium, Iron, Niacin, Thiamin), Sugar, Demerara Sugar (Sugar, Cane Molasses), Modified Starch (Maize), Vegetable Oil (Rapeseed), Whey Powder (MILK), Raising Agents (Disodium Diphosphate, Sodium Bicarbonate), Emulsifiers (Propane-1,2-Diol Esters Of Fatty Acids E477, Mono- And Diglycerides Of Fatty Acids E471, Polyglycerol Esters Of Fatty Acids E475), WHEAT Gluten, Salt, Colours (Ammonia Caramel, Algal Carotenes), Natural Flavouring, Free Range Whole EGG Powder, Flavouring, Whole Hen EGG, Vegetable Oil (Rapeseed), Vegetable Oil (Palm & Rapeseed Oil), Water, Salt, Emulsifier (Distilled Monoglyceride E471), Flavouring, Colouring (Annatto Bixin E160b(i), Curcumin E100), Cream Stabiliser (Sugar, Dried Glucose Syrup, Gelatine, Modified Starch [Acetylated Distarch Phosphate E1414], EGG Yolk Powder, Acidity Regulator [Disodium Phosphate E450(ii)], Salt), Dark Chocolate (1%) [Cocoa Mass, Sugar, Cocoa Butter, Emulsifier (SOYA Lecithin), Natural Vanilla Flavouring], White Chocolate Shavings (1%) [Sugar, Whole MILK Powder, Cocoa Butter, Emulsifier (SOYA Lecithin), Natural Vanilla Flavouring, White Chocolate With Caramel [Cocoa Butter, Sugar, Whole MILK Powder, MILK Sugar, Whey Powder (MILK), Skimmed MILK Powder, Caramelised Sugar (2%), Emulsifier (SOYA Lecithin), Natural Vanilla Flavouring, Salt], Invert Sugar Syrup, Gelatine, Salt [Salt, Anticaking Agent (Sodium Ferrocyanide)], Fat Reduced Cocoa Powder (Cocoa Solids 90%), Acidity Regulator: Potassium Carbonate.