

The information on the [Erudus System](#) has been supplied by the manufacturers of the products and, whilst the owners of the Erudus System take steps to ensure the information is regularly updated, they give no warranty and no guarantee that the information is accurate. Product information and ingredients may change, please always read product labels carefully in addition to using the information provided by Erudus One.

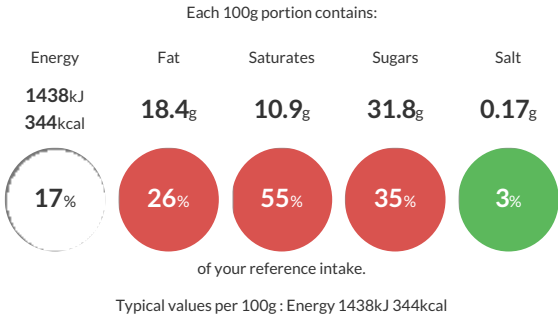
We do not accept liability for any inaccuracies or incorrect information contained on this site. Please visit <http://www.erudus.com/terms-and-conditions> for full terms and conditions.

Opera

Short Product Name:  
coffee and chocolate layered cake with a chocolate topping

Traded Unit GTIN: 03700478531439 Internal GTIN: 03700478531439 Supplier : Traiteur De Paris Suppliers Product Code : 000207 (0314301)

Reference Intake



Nutritional Information

Typical Values	Per 100g
Energy	1438kJ 344kCal
Carbohydrates	39.1g
of which sugars	31.8g
Fat	18.4g
of which saturates	10.9g
Fibre	2.2g
Protein	4.4g
Salt	0.17g

Allergy Information

Key: Contains May Contain

  
Contains Cereal/Gluten

  
Contains Milk

  
Contains Eggs

  
May Contain Peanuts

  
Contains Nuts

  
May Contain Crustaceans

  
May Contain Mustard

  
May Contain Fish

  
May Contain Lupin

  
May Contain Sesame

  
May Contain Celery

  
Contains Soya

  
May Contain Molluscs

  
Does Not Contain Sulphur Dioxide

**Allergen Statement**  
**CONTAINS** eggs and egg products, cereals containing gluten, milk and dairy products, nuts (almonds), soy and soy-based products. May contain traces of sesame, shellfish, molluscs, fish, celery, mustard, sulphite, lupine, peanuts and other nuts.

Ingredients

Plain Joconde biscuits 23.4% (whole **EGG**, sugar, **WHEAT** flour (**GLUTEN**), water, **ALMOND** powder, pea flour, baking powder: diphosphates - sodium carbonates (contains **WHEAT** starch (**GLUTEN**)), emulsifier: mono- and diglycerides of fatty acids., potato starch, **MILK** proteins), water, sugar, butter (**MILK**), topping (water, glucose syrup, sugar, gelling agent: pectin., acidifier: citric acid.), cream (**DAIRY** cream (**MILK**), stabiliser: carrageenans.), dark chocolate coating 7.3% [59% cocoa] (cocoa paste, sugar, cocoa butter, emulsifier: **SOYA** lecithin.), **EGG** whites, dark chocolate coating 3% [72% cocoa] (cocoa paste, sugar, cocoa butter, emulsifier: **SOYA** lecithin., natural vanilla flavouring), coffee extract 1.5% (coffee, water, sugar), coffee 1.4%, glucose syrup, cacao powder, beef gelatin, gelling agent: pectins (stabilisers: diphosphates, calcium phosphate.).

Dietary Information

Key: Suitable for

  
May not be suitable for Vegetarian

  
May not be suitable for Vegan

  
May not be suitable for Kosher

  
May not be suitable for Halal

  
May not be suitable for Coeliac