

The information on the [Erudus System](#) has been supplied by the manufacturers of the products and, whilst the owners of the Erudus System take steps to ensure the information is regularly updated, they give no warranty and no guarantee that the information is accurate. Product information and ingredients may change, please always read product labels carefully in addition to using the information provided by Erudus One.

We do not accept liability for any inaccuracies or incorrect information contained on this site. Please visit <http://www.erudus.com/terms-and-conditions> for full terms and conditions.

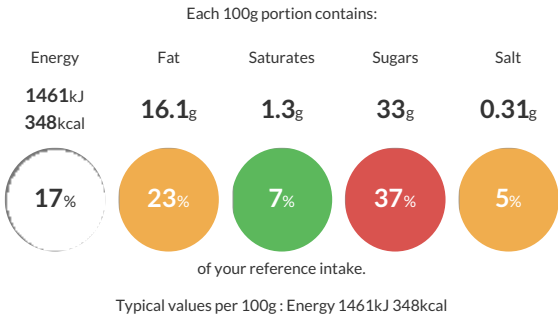
GLUTEN FREE SYRUP SPONGE PUDDING

Short Product Name:  
GLUTEN FREE SYRUP SPONGE PUDDING

Individual portions of gluten free sponge pudding with a light syrup sauce topping. Packed 1 x 12 puddings per outer case.

Traded Unit GTIN: 5015091554078 Internal GTIN: Supplier : CDT Sidoli (Welshpool) Ltd Suppliers Product Code : 55407

Reference Intake



Nutritional Information

Typical Values	Per 100g
Energy	1461kJ 348kCal
Carbohydrates	49g
of which sugars	33g
Fat	16.1g
of which saturates	1.3g
Fibre	0.1g
Protein	2.1g
Salt	0.31g

Allergy Information

Key: Contains May Contain

  
Does Not Contain Cereal/Gluten

  
May Contain Milk

  
Contains Eggs

  
Does Not Contain Peanuts

  
May Contain Nuts

  
Does Not Contain Crustaceans

  
Does Not Contain Mustard

  
Does Not Contain Fish

  
Does Not Contain Lupin

  
Does Not Contain Sesame

  
Does Not Contain Celery

  
Does Not Contain Soya

  
Does Not Contain Molluscs

  
Does Not Contain Sulphur Dioxide

Dietary Information

Key: Suitable for

  
Suitable for Vegetarian

  
May not be suitable for Vegan

  
May not be suitable for Kosher

  
May not be suitable for Halal

  
Suitable for Coeliac

Gluten Claim  
Gluten content is less than 20ppm.

Allergen Statement  
MADE IN A FACTORY THAT ALSO HANDLES THE FOLLOWING ALLERGENS: MILK & NUTS.

Ingredients

Partially inverted sugar syrup, gluten free flour blend (rice, potato, tapioca, maize, buckwheat, raising agents (mono-calcium phosphate, sodium bicarbonate), stabiliser (xanthan gum)), water, rapeseed oil, sugar, EGG, glucose syrup, raising agents (mono-calcium phosphate, potassium carbonate), modified maize starch, colours (curcumin, annatto).