

The information on the [Erudus System](#) has been supplied by the manufacturers of the products and, whilst the owners of the Erudus System take steps to ensure the information is regularly updated, they give no warranty and no guarantee that the information is accurate. Product information and ingredients may change, please always read product labels carefully in addition to using the information provided by Erudus One.

We do not accept liability for any inaccuracies or incorrect information contained on this site. Please visit <http://www.erudus.com/terms-and-conditions> for full terms and conditions.

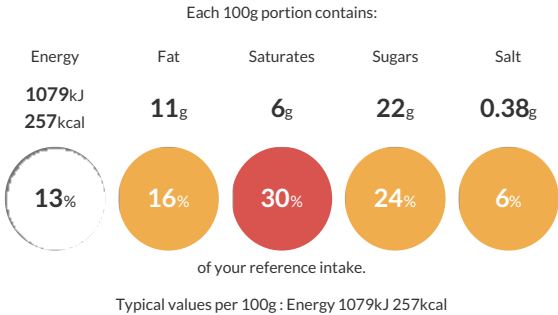
Strawberry Gateau 2 Layer Gateau

Short Product Name:
Strawberry Gateau

A two layer gateau made with stabilised dairy cream and strawberry filling layered between light textured vanilla sponges and decorated with stabilised cream rosettes and strawberries covered in a strawberry sauce. Side decorated with shortcake crumb. Solid.

Traded Unit GTIN: 05010823521915 Internal GTIN: Supplier : Mademoiselle Desserts (Taunton) Suppliers Product Code : F01020

Reference Intake



Nutritional Information

Typical Values	Per 100g
Energy	1079kJ 257kCal
Carbohydrates	36g
of which sugars	22g
Fat	11g
of which saturates	6g
Fibre	0.96g
Protein	3.7g
Salt	0.38g

Allergy Information

Key: Contains May Contain


Contains Cereal/Gluten


Contains Milk


Contains Eggs


Does Not Contain Peanuts


May Contain Nuts


Does Not Contain Crustaceans


Does Not Contain Mustard


Does Not Contain Fish


Does Not Contain Lupin


Does Not Contain Sesame


Does Not Contain Celery


Does Not Contain Soya


Does Not Contain Molluscs


Does Not Contain Sulphur Dioxide

Dietary Information

Key: Suitable for


Suitable for Vegetarian


May not be suitable for Vegan


May not be suitable for Kosher


May not be suitable for Halal


May not be suitable for Coeliac

Allergen Statement
ALLERGY ADVICE: Allergens in the ingredients list (including cereals containing gluten) are shown in CAPITALS.
May contain traces of nuts. Suitable for vegetarians.

Ingredients

Stabilised Cream [Cream (**MILK**) (20%), Dextrose, Glucose, Dried **BUTTERMILK**, Stabiliser (E407)], Sugar, Strawberries (13%), **WHEAT** Flour (with Calcium Carbonate, Iron, Niacin, Thiamin), **EGG**, Water, Strawberry Puree (3.4%), Glucose Syrup, Shortcake Biscuit [**WHEAT** Flour (with Calcium Carbonate, Iron, Niacin, Thiamin), Vegetable Oil (Palm, Rapeseed), Sugar, Whey Powder (**MILK**), Raising Agent (E500i), Salt, Natural Flavouring], Humectant (E422), Margarine [Palm Oil, Rapeseed Oil, Water, Emulsifier (E471)], Whey Powder (**MILK**), Modified Maize Starch, Raising Agents (E450i, E500ii), **WHEAT** Flour, Emulsifiers (E471, E475), Natural Flavouring, Acidity Regulators (E525, E330), Colours (E100, E163, E161b), Stabiliser (E415).