

The information on the [Erudus System](#) has been supplied by the manufacturers of the products and, whilst the owners of the Erudus System take steps to ensure the information is regularly updated, they give no warranty and no guarantee that the information is accurate. Product information and ingredients may change, please always read product labels carefully in addition to using the information provided by Erudus One.

We do not accept liability for any inaccuracies or incorrect information contained on this site. Please visit <http://www.erudus.com/terms-and-conditions> for full terms and conditions.

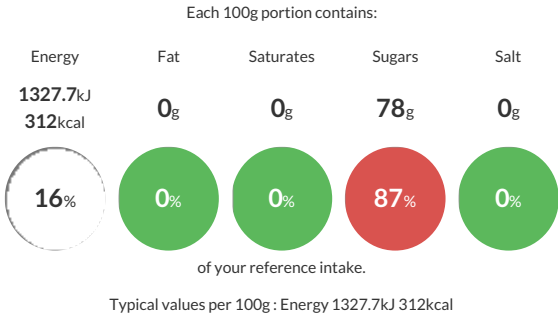
LYLES MAPLE SYRUP 6X454G TRAY (NT)

Short Product Name:
MAPLE SYRUP

Maple natural flavouring blended with golden syrup – a partially inverted refiners syrup originating from a cane sugar syrup solution. It is a pale golden amber viscous syrup. It can be used in any recipe where maple syrup is required. Use in baking to add flavour and sweetness to cakes and biscuits or use as a pouring sauce for pancakes and waffles

Traded Unit GTIN: 5010115043200 Internal GTIN: 5010115909490 Supplier : Tate & Lyle Sugars Suppliers Product Code : 410291

Reference Intake



Nutritional Information

Typical Values	Per 100g
Energy	1327.7kJ 312kCal
Carbohydrates	78g
of which sugars	78g
Fat	0g
of which saturates	0g
Fibre	0g
Protein	0.1g
Salt	0g

Allergy Information

Key: Contains May Contain


Does Not Contain Cereal/Gluten


Does Not Contain Milk


Does Not Contain Eggs


Does Not Contain Peanuts


Does Not Contain Nuts


Does Not Contain Crustaceans


Does Not Contain Mustard


Does Not Contain Fish


Does Not Contain Lupin


Does Not Contain Sesame


Does Not Contain Celery


Does Not Contain Soya


Does Not Contain Molluscs


Does Not Contain Sulphur Dioxide

Dietary Information

Key: Suitable for


Suitable for Vegetarian


Suitable for Vegan


Suitable for Kosher


Suitable for Halal


Suitable for Coeliac

Allergen Statement
Allergen Status: This product is Allergen free as defined by European Regulation (EU) 1169/2011 and European Commission Regulation (EC) 41/2009 (Gluten ≤ 20ppm).

Ingredients

Partially inverted refiners syrup, Natural flavouring” or “Golden syrup, Natural flavouring”