


The information on the [Erudus System](#) has been supplied by the manufacturers of the products and, whilst the owners of the Erudus System take steps to ensure the information is regularly updated, they give no warranty and no guarantee that the information is accurate. Product information and ingredients may change, please always read product labels carefully in addition to using the information provided by Erudus One.

We do not accept liability for any inaccuracies or incorrect information contained on this site. Please visit <http://www.erudus.com/terms-and-conditions> for full terms and conditions.

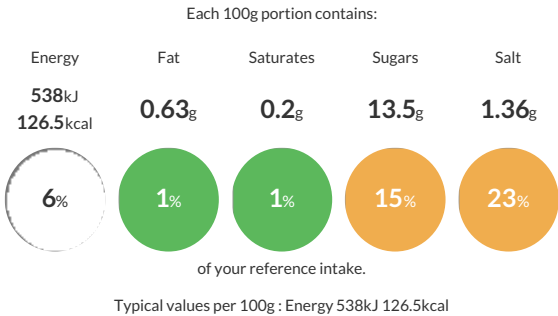
Purple Pineapple Low Fat BBQ Chicken 2.5kg

Short Product Name:
Low Fat BBQ Chicken

Diced chicken in a smokey BBQ style sauce

Traded Unit GTIN:  Internal GTIN:  Supplier:  Suppliers Product Code: 

Reference Intake



Nutritional Information

Typical Values	Per 100g
Energy	538kJ 126.5kCal
Carbohydrates	15.78g
of which sugars	13.5g
Fat	0.63g
of which saturates	0.2g
Fibre	0.3g
Protein	14.48g
Salt	1.36g

Allergy Information

Key:  Contains  May Contain


Contains
Cereal/Gluten


Does Not
Contain
Milk


Does Not
Contain
Eggs


Does Not
Contain
Peanuts


Does Not
Contain
Nuts


Does Not
Contain
Crustaceans


Does Not
Contain
Mustard



Does Not
Contain
Fish



Does Not
Contain
Lupin


Does Not
Contain
Sesame


Does Not
Contain
Celery


Does Not
Contain
Soya


Does Not
Contain
Molluscs


Does Not
Contain
Sulphur
Dioxide

Dietary Information

Key:  Suitable for


May not be
suitable for
Vegetarian


May not be
suitable for
Vegan


May not be
suitable for
Kosher


May not be
suitable for
Halal


NO DATA for
Coeliac

Ingredients

Cooked Chicken 50% (Chicken, salt) **BBQ Sauce** 50% (Water, glucose syrup, tomato paste, spirit vinegar, thickener [modified starch], molasses, salt, **BARLEY** malt extract (**GLUTEN**), caramel, flavouring, garlic powder, spice).