

The information on the [Erudus System](#) has been supplied by the manufacturers of the products and, whilst the owners of the Erudus System take steps to ensure the information is regularly updated, they give no warranty and no guarantee that the information is accurate. Product information and ingredients may change, please always read product labels carefully in addition to using the information provided by Erudus One.

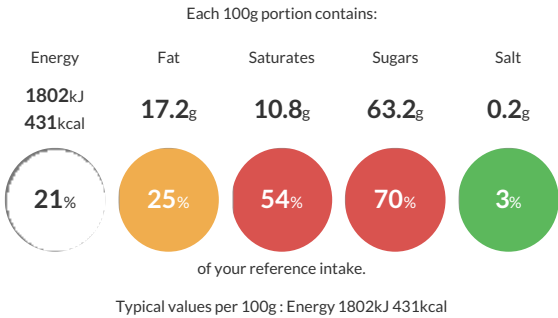
We do not accept liability for any inaccuracies or incorrect information contained on this site. Please visit <http://www.erudus.com/terms-and-conditions> for full terms and conditions.

Milk Chocolate Raisins 12x100g

Plump juicy raisins covered in a sumptuous layer of rich milk chocolate... The perfect snack

Traded Unit GTIN: 05013803804824 Internal GTIN: 5013803804800 Supplier: RM Curtis & Co Ltd Suppliers Product Code: 834812

Reference Intake



Nutritional Information

Typical Values	Per 100g
Energy	1802kJ 431kCal
Carbohydrates	63.3g
of which sugars	63.2g
Fat	17.2g
of which saturates	10.8g
Fibre	1.7g
Protein	4.8g
Salt	0.2g

Allergy Information

Key: Contains May Contain


May Contain Cereal/Gluten


Contains Milk


Does Not Contain Eggs


May Contain Peanuts


May Contain Nuts


Does Not Contain Crustaceans


Does Not Contain Mustard


Does Not Contain Fish


Does Not Contain Lupin


Does Not Contain Sesame


Does Not Contain Celery


May Contain Soya


Does Not Contain Molluscs


May Contain Sulphur Dioxide

Dietary Information

Key: Suitable for


Suitable for Vegetarian


May not be suitable for Vegan


May not be suitable for Kosher


May not be suitable for Halal


May not be suitable for Coeliac

Ingredients

MILK chocolate (58%) (Sugar, Cocoa butter, MILK powder, Cocoa mass, Whey powder (MILK), Palm oil, Butter oil (MILK), Emulsifier: Rapeseed lecithin, Glazing agent: Gum arabic, Maize protein). Raisins (42%) (Raisins, Sunflower oil). Contains vegetable oils in addition to Cocoa Butter; Milk chocolate contains Milk solids 20% minimum, Cocoa solids 20% minimum