

The information on the [Erudus System](#) has been supplied by the manufacturers of the products and, whilst the owners of the Erudus System take steps to ensure the information is regularly updated, they give no warranty and no guarantee that the information is accurate. Product information and ingredients may change, please always read product labels carefully in addition to using the information provided by Erudus One.

We do not accept liability for any inaccuracies or incorrect information contained on this site. Please visit <http://www.erudus.com/terms-and-conditions> for full terms and conditions.

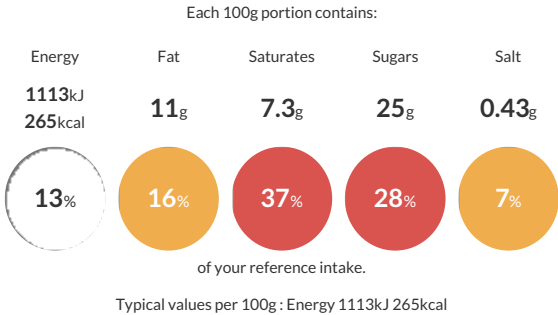
## Black Forest Gateau 2 Layer Gateau

Short Product Name:  
Black Forest Gateau

Two layers of fluffy chocolate sponge sandwiched with cherry sauce, covered with cream and topped with a piped crown of cream rosettes with a cherry sauce center studded with whole cherries. Decorated on all sides with chocolate flavour chips.

Traded Unit GTIN: 05010823521922 Internal GTIN: Supplier : Mademoiselle Desserts (Taunton) Suppliers Product Code : F00020

### Reference Intake



### Nutritional Information

Typical Values	Per 100g
Energy	1113kJ 265kCal
Carbohydrates	37g
of which sugars	25g
Fat	11g
of which saturates	7.3g
Fibre	1.2g
Protein	3.8g
Salt	0.43g

### Allergy Information

Key: Contains May Contain

  
Contains Cereal/Gluten

  
Contains Milk

  
Contains Eggs

  
Does Not Contain Peanuts

  
May Contain Nuts

  
Does Not Contain Crustaceans

  
Does Not Contain Mustard

  
Does Not Contain Fish

  
Does Not Contain Lupin

  
Does Not Contain Sesame

  
Does Not Contain Celery

  
Contains Soya

  
Does Not Contain Molluscs

  
Does Not Contain Sulphur Dioxide

### Dietary Information

Key: Suitable for

  
Suitable for Vegetarian

  
May not be suitable for Vegan

  
May not be suitable for Kosher

  
May not be suitable for Halal

  
NO DATA for Coeliac

### Ingredients

Cream (**MILK**) (22%), Sugar, Water, **WHEAT** Flour (**WHEAT** Flour, Calcium Carbonate, Niacin, Iron, Thiamin), Cherries (11%), **EGG**, Glucose Syrup, Fat Reduced Cocoa Powder (3%), Palm Oil, Dextrose, Cherry Concentrate, Modified Maize Starch, Raising Agents (Disodium Diphosphate, Sodium Hydrogen Carbonate), Skimmed **MILK** Powder, Whey Powder (**MILK**), Emulsifiers (Mono- and Diglycerides of Fatty Acids, Polyglycerol Esters of Fatty Acids, **SOYA** Lecithin), Modified Potato Starch, **WHEAT** Flour, Acidity Regulators (Citric Acid, Potassium Hydroxide), **BUTTERMILK** Powder, Natural Flavouring, Colours (Anthocyanins Curcumin), Thickener (Xanthan Gum), Stabilisers (Carrageenan, Guar Gum).