

The information on the [Erudus System](#) has been supplied by the manufacturers of the products and, whilst the owners of the Erudus System take steps to ensure the information is regularly updated, they give no warranty and no guarantee that the information is accurate. Product information and ingredients may change, please always read product labels carefully in addition to using the information provided by Erudus One.

We do not accept liability for any inaccuracies or incorrect information contained on this site. Please visit <http://www.erudus.com/terms-and-conditions> for full terms and conditions.

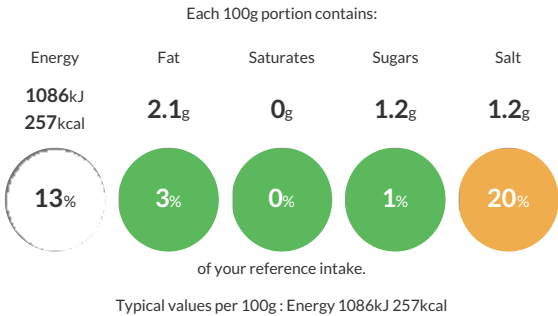
100 x Assortment of Diamond Roll 55g

Short Product Name:
MIX LOSANGE BREADS

25 Plain Diamond Roll 55g 25 Cereal Diamond Roll 55g 25 Poppy Seeds Diamond Roll 55g 25 Sesame Seeds Diamond Roll 55g

Traded Unit GTIN: 3419280021426 Internal GTIN: Supplier: Bridor Suppliers Product Code: 33074

Reference Intake



Nutritional Information

Typical Values	Per 100g
Energy	1086kJ 257kCal
Carbohydrates	49g
of which sugars	1.2g
Fat	2.1g
of which saturates	0g
Fibre	3.4g
Protein	8.7g
Salt	1.2g

Allergy Information

Key: Contains May Contain


Contains Cereal/Gluten


May Contain Milk


May Contain Eggs


Does Not Contain Peanuts


May Contain Nuts


Does Not Contain Crustaceans


Does Not Contain Mustard


Does Not Contain Fish


Does Not Contain Lupin


Contains Sesame


Does Not Contain Celery


Does Not Contain Soya


Does Not Contain Molluscs


Does Not Contain Sulphur Dioxide

Dietary Information

Key: Suitable for


Suitable for Vegetarian


Suitable for Vegan


May not be suitable for Kosher


May not be suitable for Halal


NO DATA for Coeliac

Allergen Statement
May contain traces of: milk, nuts, eggs.

Ingredients

Cereal Diamond Roll: **WHEAT** flour, water, sourdough (stonemill **WHEAT** flour, water), **SESAME** seeds 2.6%, brown flax seeds 2.5%, malted **WHEAT** flakes 1.9%, salt, yeast, **WHEAT** gluten, **WHEAT** germ flakes 0.24%, malted **WHEAT** flour.

Plain Diamond Roll: **WHEAT** flour, water, yeast, salt, **WHEAT** gluten, dehydrated devitalized **WHEAT** sourdough, **WHEAT** germ flakes 0.3%, malted **WHEAT** flour.

Poppy Seeds Diamond Roll: **WHEAT** flour, water, poppy seeds 2.6%, salt, yeast, **WHEAT** gluten, **WHEAT** germ flakes 0.29%, malted **WHEAT** flour.

Sesame Seeds Diamond Roll: **WHEAT** flour, water, **SESAME** seeds 1.6%, salt, finish 1% (**SESAME** seeds), yeast, **WHEAT** gluten, **WHEAT** germ flakes 0.29%, malted **WHEAT** flour.