

Supplier's Product Code :  
Product Added :  
Last Updated by Supplier :  
erudus id :

619379  
25 July 2024  
25 July 2024  
00f58edc953f4153aece089a0aa45e86



The information on the Erudus System has been supplied by the manufacturers of the products and, whilst the owners of the Erudus System take steps to ensure the information is regularly updated, they give no warranty and no guarantee that the information is accurate. Product information and ingredients may change, please always read product labels carefully in addition to using the information provided by Erudus One.

We do not accept liability for any inaccuracies or incorrect information contained on this site. Please visit <http://www.erudus.com/terms-and-conditions> for full terms and conditions.

## LEE KUM KEE THAI SWEET CHILLI SAUCE 2X2.35KG

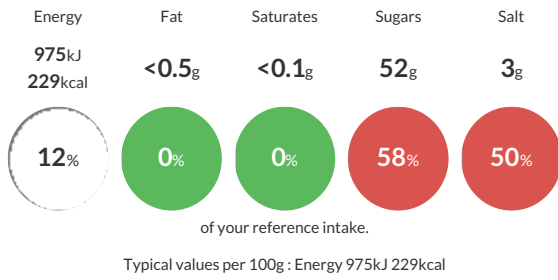
Short Product Name:  
THAI SWEET CHILLI SAUCE

2.35 Kg Lee Kum Kee Thai Sweet Chilli Sauce The Professional Range. Best for: Dips, dressing and sauce mix.

Traded Unit GTIN: 60078895146150 Internal GTIN: 0078895146158 Supplier: Petty Wood & Co Suppliers Product Code: 619379

### Reference Intake

Each 100g portion contains:



### Nutritional Information

Typical Values	Per 100g
Energy	975kJ 229kCal
Carbohydrates	56g
of which sugars	52g
Fat	<0.5g
of which saturates	<0.1g
Fibre	0g
Protein	0.9g
Salt	3g

### Allergy Information

Key: Contains May Contain



### Dietary Information

Key: Suitable for



### Allergen Statement

FOR ALLERGENS SEE INGREDIENTS IN BIOLD/CAPITALS

### Ingredients

Sugar, Water, Dried Glucose Syrup, Salted Chilli Peppers 6%, Rice Vinegar, Dehydrated Garlic 2%, Salt, Modified Corn Starch, Pineapple Juice Concentrate (concentrated pineapple juice, water). Acids (E260, E330). Shallot, Garlic Powder 0.5%, Stabilizer E415 (SOYBEANS, WHEAT). Colour E160c.