

The information on the [Erudus System](#) has been supplied by the manufacturers of the products and, whilst the owners of the Erudus System take steps to ensure the information is regularly updated, they give no warranty and no guarantee that the information is accurate. Product information and ingredients may change, please always read product labels carefully in addition to using the information provided by Erudus One.

We do not accept liability for any inaccuracies or incorrect information contained on this site. Please visit <http://www.erudus.com/terms-and-conditions> for full terms and conditions.

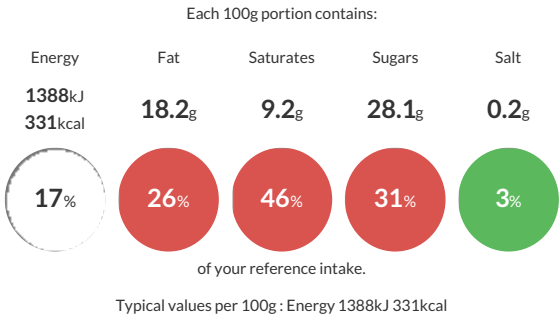
Baked Pear and Caramel Cheesecake 12 Portion

Short Product Name:
Baked Pear and Caramel Cheesecake

A crumble Ginger and Digestive Biscuit Base with a Baked Cheesecake swirled with Toffee Sauce ontop of a Pear and Apple compote, finished with a Caramel sauce over the surface.

Traded Unit GTIN: **5016467003619** Internal GTIN: Supplier : **Aulds Delicious Desserts Ltd** Suppliers Product Code : **PO133**

Reference Intake



Nutritional Information

Typical Values	Per 100g
Energy	1388kJ 331kCal
Carbohydrates	37.5g
of which sugars	28.1g
Fat	18.2g
of which saturates	9.2g
Fibre	1.1g
Protein	4.1g
Salt	0.2g

Allergy Information

Key: **Contains** **May Contain**


Contains Cereal/Gluten


Contains Milk


Contains Eggs


May Contain Peanuts


May Contain Nuts


Does Not Contain Crustaceans


Does Not Contain Mustard


Does Not Contain Fish


Does Not Contain Lupin


Does Not Contain Sesame


Does Not Contain Celery


Does Not Contain Soya


Does Not Contain Molluscs


Does Not Contain Sulphur Dioxide

Dietary Information

Key: **Suitable for**


Suitable for Vegetarian


May not be suitable for Vegan


May not be suitable for Kosher


May not be suitable for Halal


May not be suitable for Coeliac

Ingredients

Full Fat Cream Cheese (15%) (**MILK**), Pears (11%), Ginger Crumb [Fortified **WHEAT** Flour (**WHEAT** Flour, Calcium Carbonate, Iron, Niacin and Thiamin), Sugar, Palm and Rapeseed Oil, Invert Sugar Syrup, Raising Agents (E500ii), Salt, Flavouring], Sugar, Caramel Sauce (9%) [Caramelised Glucose Syrup, Glucose Syrup, Water, Caramelised Syrup, Gelling Agent (E440)], Biscuit Crumb [Fortified **WHEAT** Flour (**WHEAT** Flour, Calcium Carbonate, Iron, Niacin and Thiamin), Palm and Rapeseed Oil, Sugar, **OAT** Flour, Invert Sugar Syrup, Whey Powder (**MILK**), Raising Agents (E500, E503), Salt], Sour Cream (**MILK**), Apples (6%), Margarine [Palm and Rapeseed Oil, Water, Salt, Emulsifier (E475), Colours (E100, Annatto Bixin), Flavouring], Dairy Cream (4%)(**MILK**), Whole Pasturised **EGG**, Pear Juice (2%), Invert Sugar Syrup, Stabiliser Blend [Stabilisers (E1442, E446, E406, E410)], Modified Maize Starch, Butter (**MILK**) Golden Syrup, Lemon Juice, Flavourings, Emulsifier Blend [Water, Sugar, Emulsifiers (E475, E471)], Rapeseed Oil, Acidity Regulators (E330), Caramelised Sugar Syrup, Stabiliser (E415), Cinnamon.