

The information on the [Erudus System](#) has been supplied by the manufacturers of the products and, whilst the owners of the Erudus System take steps to ensure the information is regularly updated, they give no warranty and no guarantee that the information is accurate. Product information and ingredients may change, please always read product labels carefully in addition to using the information provided by Erudus One.

We do not accept liability for any inaccuracies or incorrect information contained on this site. Please visit <http://www.erudus.com/terms-and-conditions> for full terms and conditions.

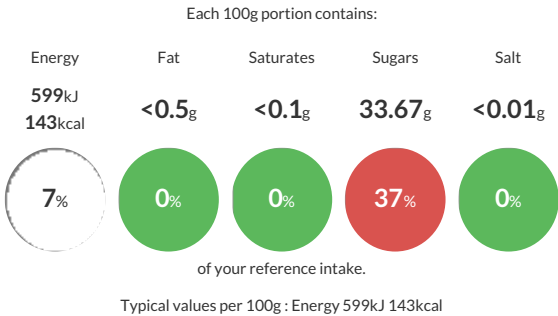
Et Voila Red Cherry Pie Filling 2kg

Short Product Name:  
Et Voila Red Cherry Pie Filling 2kg

Red Cherry Pie Filling

Traded Unit GTIN: 5060778191831 Internal GTIN: 5060778191398 Supplier : Et Voila Ltd Suppliers Product Code : EV71

Reference Intake



Nutritional Information

Typical Values	Per 100g
Energy	599kJ 143kCal
Carbohydrates	35.44g
of which sugars	33.67g
Fat	<0.5g
of which saturates	<0.1g
Fibre	<0.5g
Protein	<0.5g
Salt	<0.01g

Allergy Information

Key: Contains May Contain

  
Does Not Contain Cereal/Gluten

  
Does Not Contain Milk

  
Does Not Contain Eggs

  
Does Not Contain Peanuts

  
Does Not Contain Nuts

  
Does Not Contain Crustaceans

  
Does Not Contain Mustard

  
Does Not Contain Fish

  
Does Not Contain Lupin

  
Does Not Contain Sesame

  
Does Not Contain Celery

  
Does Not Contain Soya

  
Does Not Contain Molluscs

  
Does Not Contain Sulphur Dioxide

Allergen Statement  
Allergens handled on site: Milk, Mustard, Soybeans, Cereals containing Gluten (Barley) and Sulphites.

Ingredients

Red Cherry(39%), Sugar, Water, Modified Maize Starch, Pectin, Potassium Sorbate, Citric Acid.

Dietary Information

Key: Suitable for

  
Suitable for Vegetarian

  
Suitable for Vegan

  
Suitable for Kosher

  
Suitable for Halal

  
NO DATA for Coeliac