

The information on the [Erudus System](#) has been supplied by the manufacturers of the products and, whilst the owners of the Erudus System take steps to ensure the information is regularly updated, they give no warranty and no guarantee that the information is accurate. Product information and ingredients may change, please always read product labels carefully in addition to using the information provided by Erudus One.

We do not accept liability for any inaccuracies or incorrect information contained on this site. Please visit <http://www.erudus.com/terms-and-conditions> for full terms and conditions.

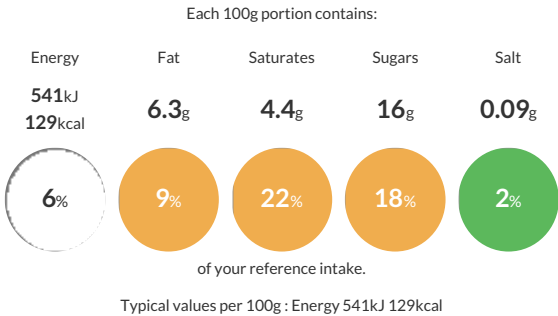
Judes Strawberries & Cream Ice Cream - 6 x 4L

Short Product Name:
Jude's Strawberries & Cream Ice Cream - 6 x 4L

Strawberry Ice Cream with Strawberries in Syrup

Traded Unit GTIN: 05060081110222 Internal GTIN: 5060081110659 Supplier : Judes Ices Suppliers Product Code : FI0042

Reference Intake



Nutritional Information

Typical Values	Per 100g
Energy	541kJ 129kCal
Carbohydrates	16g
of which sugars	16g
Fat	6.3g
of which saturates	4.4g
Fibre	-g
Protein	2.5g
Salt	0.09g

Allergy Information

Key: Contains May Contain


Does Not Contain Cereal/Gluten


Contains Milk


Does Not Contain Eggs


Does Not Contain Peanuts


Does Not Contain Nuts


Does Not Contain Crustaceans


Does Not Contain Mustard


Does Not Contain Fish


Does Not Contain Lupin


Does Not Contain Sesame


Does Not Contain Celery


Does Not Contain Soya


Does Not Contain Molluscs


Does Not Contain Sulphur Dioxide

Dietary Information

Key: Suitable for


Suitable for Vegetarian


NO DATA for Vegan


May not be suitable for Kosher


May not be suitable for Halal


NO DATA for Coeliac

Allergen Statement
For allergens see ingredients in bold.

Ingredients

fresh whole **milk**, sugar, strawberry puree (12.6%), strawberries in syrup (9.2%) [strawberries (56%), sugar, water, cornflour, colour (red beet extract), natural flavouring], fresh double cream (**milk**), skimmed **milk** powder, coconut oil, dextrose, emulsifier (mono- and diglycerides of fatty acids), stabilisers (locust bean gum, guar gum), water, acidity regulator (citric acid), colour (red beet extract), natural strawberry flavouring, spirulina extract.