

Supplier's Product Code :
Product Added :
Last Updated by Supplier :
erudus id :

34026 Crusha Raspberry Milkshake Mix 12x1 Litre
20 February 2025
20 February 2025
02e11e7442e74b9ebe7d446b3955730b9



The information on the Erudus System has been supplied by the manufacturers of the products and, whilst the owners of the Erudus System take steps to ensure the information is regularly updated, they give no warranty and no guarantee that the information is accurate. Product information and ingredients may change, please always read product labels carefully in addition to using the information provided by Erudus One.

We do not accept liability for any inaccuracies or incorrect information contained on this site. Please visit <http://www.erudus.com/terms-and-conditions> for full terms and conditions.

34026 Crusha Raspberry Milkshake Mix 12x1 Litre

Short Product Name:

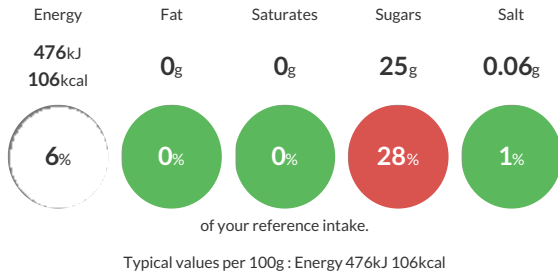
34026 Crusha Raspberry Milkshake Mix 12x1 Litre

A homogenous blend of sugar syrup and raspberry flavour manufactured to give a detectable taste of raspberry when tasted either undiluted or diluted with milk. The syrup is non-viscous, and it does not contain any visible suspended solids. The product is GMO-free and does not originate from or contain ingredients from genetic modification. Conforms to all relevant statutory requirements (UK & EU Regulations).

Traded Unit GTIN: 05010067340266 Internal GTIN: 5010067340259 Supplier: The Silver Spoon Company Suppliers Product Code : 34026 Crusha Raspberry Milkshake Mix 12x1 Litre

Reference Intake

Each 100g portion contains:



Nutritional Information

Typical Values	Per 100g
Energy	476kJ 106kCal
Carbohydrates	25g
of which sugars	25g
Fat	0g
of which saturates	0g
Fibre	0g
Protein	0g
Salt	0.06g

Allergy Information

Key: Contains May Contain



Dietary Information

Key: Suitable for



Ingredients

Water, Sugar, Fruit and Vegetable Concentrates (Beetroot and Carrot), Acid (Citric Acid), Preservative (Potassium Sorbate), Flavouring, Acidity Regulator (Tri Sodium Citrate), Antioxidant (Ascorbic Acid), Sweetener (Sodium Saccharin).