

The information on the [Erudus System](#) has been supplied by the manufacturers of the products and, whilst the owners of the Erudus System take steps to ensure the information is regularly updated, they give no warranty and no guarantee that the information is accurate. Product information and ingredients may change, please always read product labels carefully in addition to using the information provided by Erudus One.

We do not accept liability for any inaccuracies or incorrect information contained on this site. Please visit <http://www.erudus.com/terms-and-conditions> for full terms and conditions.

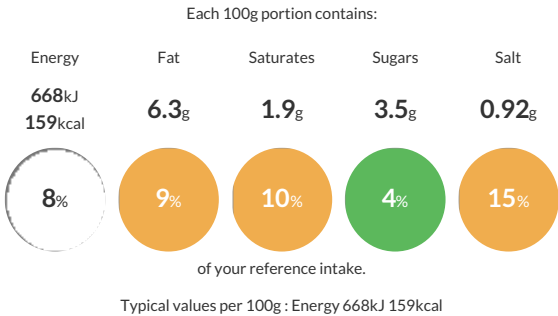
## Spinach & Mushroom Lasagne 400g x 12

Short Product Name:  
Spinach & Mushroom Lasagne

Spinach & Mushroom mix layered between lasagne sheets and topped with a creamy white sauce

Traded Unit GTIN: **5055775100511** Internal GTIN: Supplier : **Scheff Foods Ltd** Suppliers Product Code : **SMLS400**

### Reference Intake



### Nutritional Information

Typical Values	Per 100g
Energy	668kJ 159kCal
Carbohydrates	19.9g
of which sugars	3.5g
Fat	6.3g
of which saturates	1.9g
Fibre	1g
Protein	5.1g
Salt	0.92g

### Allergy Information

Key: Contains May Contain

  
Contains Cereal/Gluten

  
Contains Milk

  
Contains Eggs

  
Does Not Contain Peanuts

  
May Contain Nuts

  
Does Not Contain Crustaceans

  
Does Not Contain Mustard

  
Does Not Contain Fish

  
Does Not Contain Lupin

  
Does Not Contain Sesame

  
Contains Celery

  
Does Not Contain Soya

  
Does Not Contain Molluscs

  
Does Not Contain Sulphur Dioxide

### Dietary Information

Key: Suitable for

  
Suitable for Vegetarian

  
May not be suitable for Vegan

  
May not be suitable for Kosher

  
May not be suitable for Halal

  
May not be suitable for Coeliac

Allergen Statement  
Contains Gluten (Wheat), Egg, Milk & Celery

### Ingredients

Water, Lasagne (18%) (Contains Durum **WHEAT** Semolina, Water, Whole **EGG**), **MILK**, Onion, Spinach (7%), Bechamel Powder (Contains **MILK** Powder, Modified Maize Starch, Palm Fat Powder, **WHEAT** Flour (Calcium Carbonate, Iron, Niacin, Thiamin), Dried Glucose Syrup, Salt, Onion Powder, Sage, Pepper), Mushroom (6%), Single Cream [**MILK**], Fortified **WHEAT** Flour (Contains Calcium Carbonate, Iron, Niacin, Thiamin), Rapeseed Oil, Margarine (Contains Palm Oil, Rapeseed Oil, Water, Salt, Emulsifier E471, Natural Colourings (E160b(i), E100), Natural Flavouring), Cheddar Cheese [**MILK**], Garlic Puree, Full Fat Soft Cheese [**MILK**], Bouillion (Contains Salt, Palm & Sunflower Oil, Potato Starch, Sugar, Maltodextrin, Yeast Extract, Natural Flavourings, Carrot, Onion, Spices [ **CELERY** ], Herb), Cornflour, Salt, Yeast Extract, Spices, Herb