

Supplier's Product Code :  
Product Added :  
Last Updated by Supplier :  
erudus id :

F10371  
11 February 2026  
11 February 2026  
043aee99287b4ce3a212d497a04c646b



The information on the **Erudus System** has been supplied by the manufacturers of the products and, whilst the owners of the Erudus System take steps to ensure the information is regularly updated, they give no warranty and no guarantee that the information is accurate. Product information and ingredients may change, please always read product labels carefully in addition to using the information provided by Erudus One.

We do not accept liability for any inaccuracies or incorrect information contained on this site. Please visit <http://www.erudus.com/terms-and-conditions> for full terms and conditions.

## Blackcurrant Eton Mess Ice Cream - 1 x 4L

Short Product Name:

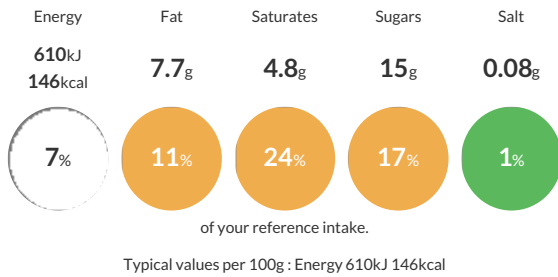
Blackcurrant Eton Mess Ice Cream - 1 x 4L

Vanilla Ice Cream with Blackcurrant Sauce and Meringue Pieces

Traded Unit GTIN: - Internal GTIN: 5060081118150 Supplier: **Judes Ices** Suppliers Product Code: F10371

### Reference Intake

Each 100g portion contains:



### Nutritional Information

Typical Values	Per 100g
Energy	610kJ 146kCal
Carbohydrates	17g
of which sugars	15g
Fat	7.7g
of which saturates	4.8g
Fibre	-g
Protein	2.3g
Salt	0.08g

### Allergy Information

Key: **Contains** **May Contain**



### Dietary Information

Key: **Suitable for**



### Allergen Statement

For allergens see ingredients in bold.

### Ingredients

Ingredients: fresh whole **milk**, fresh double cream (**milk**), **blackcurrant sauce** (10%) [glucose syrup, sugar, water, **blackcurrant puree** (12%), cornflour, **blackcurrant concentrate** (2%), pectin, carrot and blueberry concentrates, natural flavouring], sugar, skimmed **milk powder**, meringue pieces (2%) [sugar, **wheat starch**, free range **egg white powder**, cocoa butter], dextrose, emulsifier (mono- and diglycerides of fatty acids), stabilisers (locust bean gum, guar gum), Bourbon vanilla extract, colour (beta carotene).