

The information on the [Erudus System](#) has been supplied by the manufacturers of the products and, whilst the owners of the Erudus System take steps to ensure the information is regularly updated, they give no warranty and no guarantee that the information is accurate. Product information and ingredients may change, please always read product labels carefully in addition to using the information provided by Erudus One.

We do not accept liability for any inaccuracies or incorrect information contained on this site. Please visit <http://www.erudus.com/terms-and-conditions> for full terms and conditions.

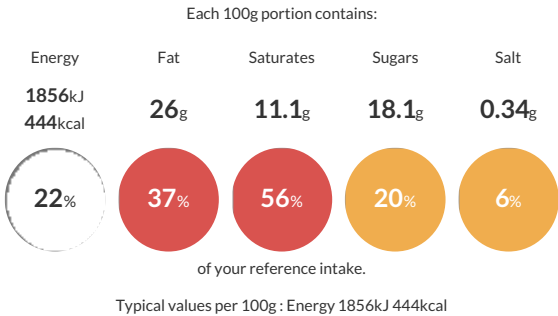
Cinnamon Swirl

Short Product Name:
Cinnamon Swirl

Frozen pre-proved Danish pastry swirl with a cinnamon filling, topped with glaze.

Traded Unit GTIN: 05701536805132 Internal GTIN: Supplier: Lantmannen Unibake Suppliers Product Code: 80513

Reference Intake



Nutritional Information

Typical Values	Per 100g
Energy	1856kJ 444kCal
Carbohydrates	46.5g
of which sugars	18.1g
Fat	26g
of which saturates	11.1g
Fibre	0.8g
Protein	5.7g
Salt	0.34g

Allergy Information

Key: Contains May Contain


Contains Cereal/Gluten


Contains Milk


Contains Eggs


Does Not Contain Peanuts


May Contain Nuts


Does Not Contain Crustaceans


Does Not Contain Mustard


Does Not Contain Fish


Does Not Contain Lupin


Does Not Contain Sesame


Does Not Contain Celery


Does Not Contain Soya


Does Not Contain Molluscs


Does Not Contain Sulphur Dioxide

Allergen Statement
May contain traces of nuts.

Ingredients

DOUGH: WHEAT Flour (with Calcium, Iron, Niacin, Thiamin), Vegetable Margarine (Palm Oil, Rapeseed Oil, Water, Emulsifier (E471), Salt, Acidity Regulator (E330), Flavouring), Water, Yeast, Egg (EGG, Salt), Sugar, Improver (WHEAT Flour). **FILLING:** Vegetable Margarine (Palm Oil, Rapeseed Oil, Water, Coconut Oil, Salt, Emulsifier (E471), Acidity Regulator (E330), Flavouring), Sugar, Water, Custard Powder (Sugar, Modified Potato Starch, Whey Powder (MILK), Skimmed MILK Powder, Coconut Oil, Stabilisers (E404, E450iii, E339ii, E451i), Glucose Syrup, Flavouring, Colour (E160aiii), Salt, MILK Protein), Sugar Syrup, Cinnamon (0.5%), WHEAT Flour, Cane Sugar Syrup. **TOPPING:** Ready Glaze (Water, Glazing Agent (E953), Sugar, Gelling Agent (E406), Acidity Regulator (E330), Preservative (E202)). **ICING:** (Sugar, Water, Glucose Syrup).

Dietary Information

Key: Suitable for


Suitable for Vegetarian


May not be suitable for Vegan


May not be suitable for Kosher


Suitable for Halal


NO DATA for Coeliac