

Supplier's Product Code :  
Product Added :  
Last Updated by Supplier :  
erudus id :

012129P  
28 May 2026  
29 May 2026  
05180ffa567940d19adb32180c6a5570



The information on the **Erudus System** has been supplied by the manufacturers of the products and, whilst the owners of the Erudus System take steps to ensure the information is regularly updated, they give no warranty and no guarantee that the information is accurate. Product information and ingredients may change, please always read product labels carefully in addition to using the information provided by Erudus One.

We do not accept liability for any inaccuracies or incorrect information contained on this site. Please visit <http://www.erudus.com/terms-and-conditions> for full terms and conditions.

## Purple Pineapple BBQ Chicken 1kg

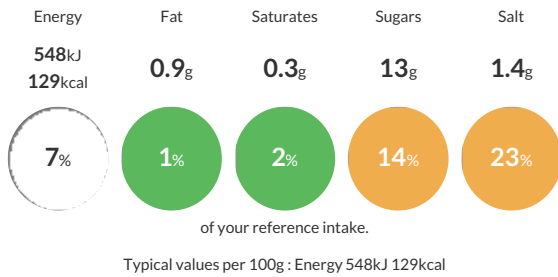
Short Product Name:  
BBQ Chicken

Diced chicken in a smokey BBQ style sauce

Traded Unit GTIN:  Internal GTIN:  Supplier: **Kff Ltd** Suppliers Product Code: **012129P**

### Reference Intake

Each 100g portion contains:



### Nutritional Information

Typical Values	Per 100g
Energy	548kJ 129kCal
Carbohydrates	16g
of which sugars	13g
Fat	0.9g
of which saturates	0.3g
Fibre	0.5g
Protein	14g
Salt	1.4g

### Allergy Information

Key: **Contains** **May Contain**



### Dietary Information

Key: **Suitable for**



### Ingredients

Chicken (50%) [Chicken (98%), Salt], Bbq Sauce (50%) [Water, Glucose Syrup Solids, Tomato Paste, Spirit Vinegar, Thickener Modified Starch (E1422), Molasses, Salt, Smoke Flavouring, Colouring Caramel E150c, Malt (<b>Barley</b>)] Extract (Barley), Dehydrated Garlic, Cayenne]

<b>ALLERGY ADVICE:</b> For allergens, see ingredients in <b>Bold</b>