

The information on the [Erudus System](#) has been supplied by the manufacturers of the products and, whilst the owners of the Erudus System take steps to ensure the information is regularly updated, they give no warranty and no guarantee that the information is accurate. Product information and ingredients may change, please always read product labels carefully in addition to using the information provided by Erudus One.

We do not accept liability for any inaccuracies or incorrect information contained on this site. Please visit <http://www.erudus.com/terms-and-conditions> for full terms and conditions.

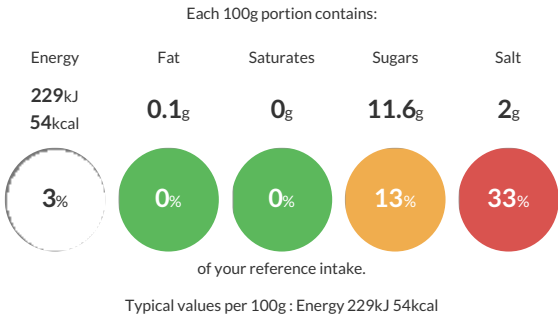
Tomato Ketchup 4.5kg

Short Product Name:  
Tomato Ketchup

Tomato Ketchup

Traded Unit GTIN: 05017482107719 Internal GTIN: 5017482007569 Supplier : Martin Mathew & Co Ltd Suppliers Product Code: A80171

Reference Intake



Nutritional Information

Typical Values	Per 100g
Energy	229kJ 54kCal
Carbohydrates	12.7g
of which sugars	11.6g
Fat	0.1g
of which saturates	0g
Fibre	0.9g
Protein	0.6g
Salt	2g

Allergy Information

Key: Contains May Contain

Does Not Contain Cereal/Gluten

Does Not Contain Milk

Does Not Contain Eggs

Does Not Contain Peanuts

Does Not Contain Nuts

Does Not Contain Crustaceans

Does Not Contain Mustard

Does Not Contain Fish

Does Not Contain Lupin

Does Not Contain Sesame

Does Not Contain Celery

Does Not Contain Soya

Does Not Contain Molluscs

Does Not Contain Sulphur Dioxide

Dietary Information

Key: Suitable for

Suitable for Vegetarian

Suitable for Vegan

May not be suitable for Kosher

May not be suitable for Halal

May not be suitable for Coeliac

Ingredients

Water, Tomato Paste, Modified Starch, Sugar, Salt, Vinegar, Spices, Sweetener(saccharin), Flavouring, Preservative(Potassium sorbate), Colouring (E110, E122)