

The information on the [Erudus System](#) has been supplied by the manufacturers of the products and, whilst the owners of the Erudus System take steps to ensure the information is regularly updated, they give no warranty and no guarantee that the information is accurate. Product information and ingredients may change, please always read product labels carefully in addition to using the information provided by Erudus One.

We do not accept liability for any inaccuracies or incorrect information contained on this site. Please visit <http://www.erudus.com/terms-and-conditions> for full terms and conditions.

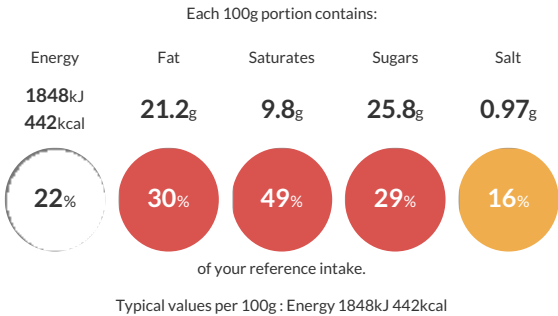
Wafflemeister 90g Classic Liege Waffle - 30 x 90g

Short Product Name:
90g Classic Liege Waffle

Traditional 90g Classic Belgian Liege Waffle

Traded Unit GTIN: 5060868700080 Internal GTIN: 5060868700066 Supplier : Wafflemeister Trading Limited Suppliers Product Code : WFMCL90X30

Reference Intake



Nutritional Information

Typical Values	Per 100g
Energy	1848kJ 442kCal
Carbohydrates	55.8g
of which sugars	25.8g
Fat	21.2g
of which saturates	9.8g
Fibre	1.8g
Protein	5.9g
Salt	0.97g

Allergy Information

Key: Contains May Contain


Contains Cereal/Gluten


May Contain Milk


Contains Eggs


Does Not Contain Peanuts


Does Not Contain Nuts


Does Not Contain Crustaceans


Does Not Contain Mustard


Does Not Contain Fish


Does Not Contain Lupin


Does Not Contain Sesame


Does Not Contain Celery


Contains Soya


Does Not Contain Molluscs


Does Not Contain Sulphur Dioxide

Allergen Statement
Contains Wheat, Eggs and Soya
May contain traces of Milk

Ingredients

WHEAT flour, sugar, margarine (vegetable oils and fats (palm and rapeseed)), water, emulsifiers soya lecithin, mono- and diglycerides of fatty acids, salt, acid regulator: citric acid, natural flavours, colouring (beta-carotene), EGGS, yeast, invert sugar syrup, stabilizer sorbitol, SOYA flour, salt, emulsifier soya lecithin, flavour.

Dietary Information

Key: Suitable for


Suitable for Vegetarian


May not be suitable for Vegan


May not be suitable for Kosher


May not be suitable for Halal


NO DATA for Coeliac