

Supplier's Product Code :
 Product Added :
 Last Updated by Supplier :
 erudus id :

FI0213
 07 May 2025
 07 May 2025
 068acda9b9ad42ad91b58cd0bf3b9319



The information on the Erudus System has been supplied by the manufacturers of the products and, whilst the owners of the Erudus System take steps to ensure the information is regularly updated, they give no warranty and no guarantee that the information is accurate. Product information and ingredients may change, please always read product labels carefully in addition to using the information provided by Erudus One.

We do not accept liability for any inaccuracies or incorrect information contained on this site. Please visit <http://www.erudus.com/terms-and-conditions> for full terms and conditions.

Jude's Vegan Chocolate Ice Cream - 24 x 100ml

Short Product Name:

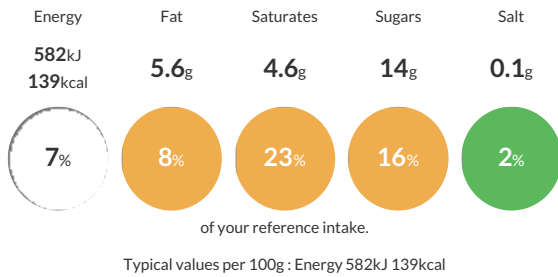
Jude's Vegan Chocolate Ice Cream - 24 x 100ml

Vegan chocolate ice cream with chocolate ripple.

Traded Unit GTIN: **5060081114817** Internal GTIN: **5060081114824** Supplier: **Judes Ices** Suppliers Product Code: **FI0213**

Reference Intake

Each 100g portion contains:



Nutritional Information

Typical Values	Per 100g
Energy	582kJ 139kCal
Carbohydrates	20g
of which sugars	14g
Fat	5.6g
of which saturates	4.6g
Fibre	-g
Protein	0.6g
Salt	0.1g

Allergy Information

Key: **Contains** **May Contain**

Does Not Contain Cereal/Gluten	May Contain Milk	May Contain Eggs	Does Not Contain Peanuts	Does Not Contain Nuts	Does Not Contain Crustaceans	Does Not Contain Mustard
Does Not Contain Fish	Does Not Contain Lupin	Does Not Contain Sesame	Does Not Contain Celery	Contains Soya	Does Not Contain Molluscs	Does Not Contain Sulphur Dioxide

Dietary Information

Key: **Suitable for**

Suitable for Vegetarian	Suitable for Vegan	May not be suitable for Kosher	May not be suitable for Halal	NO DATA for Coeliac
-------------------------	--------------------	--------------------------------	-------------------------------	---------------------

Allergen Statement

For allergens see ingredients in bold. May contain milk, egg, nuts and peanut.

Ingredients

water, chocolate sauce (13%) [sugar, water, chocolate (15%) (cocoa mass, sugar, cocoa butter, emulsifier (soya lecithin), flavourings), glucose syrup, glucose-fructose syrup, inulin, fat reduced cocoa powder, salt], sugar, glucose syrup, coconut oil, soluble corn fibre, chocolate powder (2%) (sugar, cocoa mass, fat-reduced cocoa powder, natural vanilla flavouring), cocoa powder, dextrose, fat-reduced cocoa powder, emulsifier (mono- and diglycerides of fatty acids), stabilisers (locust bean gum, guar gum), vanilla extract, sea salt.