

The information on the [Erudus System](#) has been supplied by the manufacturers of the products and, whilst the owners of the Erudus System take steps to ensure the information is regularly updated, they give no warranty and no guarantee that the information is accurate. Product information and ingredients may change, please always read product labels carefully in addition to using the information provided by Erudus One.

We do not accept liability for any inaccuracies or incorrect information contained on this site. Please visit <http://www.erudus.com/terms-and-conditions> for full terms and conditions.

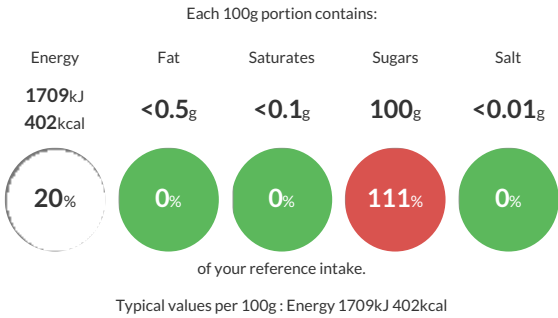
T&L DEM SACHET 1000 X 2.5G

Short Product Name:
Demerara Sugar Sachet

T&L DEM SACHET 1000 X 2.5G

Traded Unit GTIN: **5010115107872** Internal GTIN: Supplier : **T&L Sugars Limited** Suppliers Product Code : **410787**

Reference Intake



Nutritional Information

Typical Values	Per 100g
Energy	1709kJ 402kCal
Carbohydrates	100g
of which sugars	100g
Fat	<0.5g
of which saturates	<0.1g
Fibre	0g
Protein	0.5g
Salt	<0.01g

Allergy Information

Key: **Contains** **May Contain**


Does Not Contain Cereal/Gluten


Does Not Contain Milk


Does Not Contain Eggs


Does Not Contain Peanuts


Does Not Contain Nuts


Does Not Contain Crustaceans


Does Not Contain Mustard


Does Not Contain Fish


Does Not Contain Lupin


Does Not Contain Sesame


Does Not Contain Celery


Does Not Contain Soya


Does Not Contain Molluscs


Does Not Contain Sulphur Dioxide

Dietary Information

Key: **Suitable for**


Suitable for Vegetarian


Suitable for Vegan


Suitable for Kosher


May not be suitable for Halal


NO DATA for Coeliac

Allergen Statement
This product is Allergen free as defined by European Regulation (EU) 1169/2011 and European Commission Regulation (EC) 41/2009 (Gluten ≤ 20ppm).

Ingredients

Demerara sugar, Brown sugar or Cane sugar.