

Supplier's Product Code :
Product Added :
Last Updated by Supplier :
erudus id :

SW00664 - ECCGM/5
21 May 2026
21 May 2026
07459b4f34ba40bda5e099fe1210a928



The information on the Erudus System has been supplied by the manufacturers of the products and, whilst the owners of the Erudus System take steps to ensure the information is regularly updated, they give no warranty and no guarantee that the information is accurate. Product information and ingredients may change, please always read product labels carefully in addition to using the information provided by Erudus One.

We do not accept liability for any inaccuracies or incorrect information contained on this site. Please visit <http://www.erudus.com/terms-and-conditions> for full terms and conditions.

No.1 Chicken Gravy Mix 1.5kg

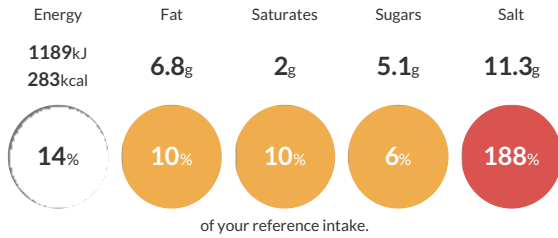
Short Product Name:
No.1 Chicken Gravy

A composite material produced by the dry blending of food ingredients. A fine, light greyish-brown coloured, free-flowing powder with a distinctive odour of chicken and sage. It has the characteristic appearance and flavour of chicken gravy when reconstituted with water.

Traded Unit GTIN: 05029540000733 Internal GTIN: 5029540000610 Supplier: Essential Cuisine Limited Suppliers Product Code: SW00664 - ECCGM/5

Reference Intake

Each 100g portion contains:



Typical values per 100g : Energy 1189kJ 283kcal

Nutritional Information

Typical Values	Per 100g
Energy	1189kJ 283kCal
Carbohydrates	54.9g
of which sugars	5.1g
Fat	6.8g
of which saturates	2g
Fibre	0.3g
Protein	0.6g
Salt	11.3g

Allergy Information

Key: **Contains** **May Contain**



Gluten Claim

Gluten content is less than 20ppm.

Allergen Statement

N/A

Ingredients

Ingredients when reconstituted:

Chicken Stock (Water, Chicken Stock, Chicken Fat, Onion, Carrot, Tomato, Herb Extract, Herb), Modified Tapioca Starch, Flavourings, Salt, Sugar, Glucose Syrup, Rice Flour, Potato Starch, Cornflour, Colour (Caramel), Maltodextrin, Yeast Extracts, Rapeseed Oil.

Dietary Information

Key: **Suitable for**

