

The information on the [Erudus System](#) has been supplied by the manufacturers of the products and, whilst the owners of the Erudus System take steps to ensure the information is regularly updated, they give no warranty and no guarantee that the information is accurate. Product information and ingredients may change, please always read product labels carefully in addition to using the information provided by Erudus One.

We do not accept liability for any inaccuracies or incorrect information contained on this site. Please visit <http://www.erudus.com/terms-and-conditions> for full terms and conditions.

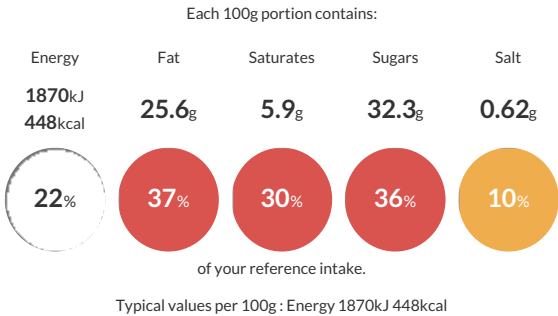
1346 - Individual Sticky Toffee Pudding (12)

Short Product Name:  
Sticky Toffee Pudding

A sponge packed with chopped dates and smothered in a sticky toffee sauce

Traded Unit GTIN: 5060622441716 Internal GTIN: Supplier: Eatons Patisserie Suppliers Product Code: 1346 187129

Reference Intake



Nutritional Information

Typical Values	Per 100g
Energy	1870kJ 448kCal
Carbohydrates	50.2g
of which sugars	32.3g
Fat	25.6g
of which saturates	5.9g
Fibre	0.7g
Protein	4.1g
Salt	0.62g

Allergy Information

Key: Contains May Contain

  
Contains  
Cereal/Gluten

  
Contains  
Milk

  
Contains  
Eggs

  
Does Not  
Contain  
Peanuts

  
May Contain  
Nuts

  
Does Not  
Contain  
Crustaceans

  
Does Not  
Contain  
Mustard

  
Does Not  
Contain  
Fish

  
Does Not  
Contain  
Lupin

  
Does Not  
Contain  
Sesame

  
Does Not  
Contain  
Celery

  
May Contain  
Soya

  
Does Not  
Contain  
Molluscs

  
Does Not  
Contain  
Sulphur  
Dioxide

Dietary Information

Key: Suitable for

  
Suitable for  
Vegetarian

  
May not be  
suitable for  
Vegan

  
May not be  
suitable for  
Kosher

  
May not be  
suitable for  
Halal

  
NO DATA for  
Coeliac

Ingredients

Toffee Crème Cake Base (30%) [WHEAT Flour (with Calcium, Iron, Niacin, Thiamin), Sugar, Demerara Sugar (Sugar, Cane Molasses), Modified Starch (Maize), Vegetable Oil (Rapeseed), Whey Solids (MILK), Raising Agents (Disodium Diphosphate, Sodium Bicarbonate), Emulsifiers (Propane-1,2-diol Esters of Fatty Acids E477, Mono- and diglycerides of Fatty Acids E471, Polyglycerol Esters of Fatty Acids E475), WHEAT Gluten, Cane Molasses, Salt, Maltodextrins, Colours (Ammonia Caramel, Algal Carotenes), Natural Flavouring, Free Range Whole EGG Powder, Flavouring], Cream [MILK], Whole Hen EGG, Rapeseed Oil, Water, Light Brown Soft Sugar (Sugar and Cane Molasses), Glucose Syrup (Contains SULPHUR DIOXIDE, Anti-Foam), Golden Syrup [Invert Sugar Syrup], Dates [Dates, Rice Flour], Unsalted Butter [Cream (MILK)], Black Treacle (Cane Molasses, Partially inverted Sugar Syrup)  
Margarine [Vegetable Oil (Palm, Rapeseed), Water, Salt, Emulsifier (Polyglycerol Esters of Fatty Acids E475), Flavourings, Colours (Curcumin, Annatto Bixin E160b(i))], Modified Starch, Icing Sugar [Anti Caking Agent (Tricalcium Phosphate E341iii)], Colour [Ammonia Caramel E150c]