

The information on the [Erudus System](#) has been supplied by the manufacturers of the products and, whilst the owners of the Erudus System take steps to ensure the information is regularly updated, they give no warranty and no guarantee that the information is accurate. Product information and ingredients may change, please always read product labels carefully in addition to using the information provided by Erudus One.

We do not accept liability for any inaccuracies or incorrect information contained on this site. Please visit <http://www.erudus.com/terms-and-conditions> for full terms and conditions.

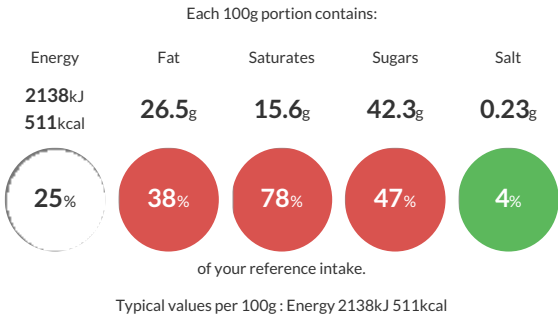
BELGIAN CHOCOLATE CRISPY BAR (1 x 15 ptn)

Short Product Name:
Belgian Chocolate Crispy Bar

Rice crispies bound with milk and dark chocolate, topped with a layer of milk chocolate and finished with milk chocolate nonpareils.

Traded Unit GTIN: 5060044070280 Internal GTIN: Supplier: The Handmade Cake Co. Suppliers Product Code: F070280

Reference Intake



Nutritional Information

Typical Values	Per 100g
Energy	2138kJ 511kCal
Carbohydrates	61.1g
of which sugars	42.3g
Fat	26.5g
of which saturates	15.6g
Fibre	2.1g
Protein	6g
Salt	0.23g

Allergy Information

Key: Contains May Contain


Contains
Cereal/Gluten


Contains
Milk


May Contain
Eggs


Does Not
Contain
Peanuts


May Contain
Nuts


Does Not
Contain
Crustaceans


Does Not
Contain
Mustard


Does Not
Contain
Fish


Does Not
Contain
Lupin


Does Not
Contain
Sesame


Does Not
Contain
Celery


Contains
Soya


Does Not
Contain
Molluscs


Does Not
Contain
Sulphur
Dioxide

Dietary Information

Key: Suitable for


Suitable for
Vegetarian


May not be
suitable for
Vegan


May not be
suitable for
Kosher


May not be
suitable for
Halal


May not be
suitable for
Coeliac

Allergen Statement
For allergens, including cereals containing gluten, see ingredients in **BOLD**. This product may contain traces of nuts and eggs as it has been made in a bakery that uses these ingredients.

Ingredients

Milk Chocolate (57%) [Sugar, Cocoa Butter, Whole **MILK** Powder, Cocoa Mass, Emulsifier (**SOYA** Lecithin), Natural Vanilla Flavouring], Rice Crispies (19%) [Rice Flour, **WHEAT** Flour (with Calcium Carbonate, Niacin, Iron, Thiamin), Sugar, Whey Powder (**MILK**), **BARLEY** Malt Flour, Salt, Rapeseed Oil, Emulsifier (**SOYA** Lecithin)], Dark Chocolate (10%) [Cocoa Mass, Sugar, Cocoa Butter, Emulsifier (**SOYA** Lecithin), Natural Vanilla Flavouring], Golden Syrup, Mini Milk Chocolate Nonpareils (3.3%) [Sugar, **WHEAT** Starch, Whole **MILK** Powder, Cocoa Mass, Cocoa Butter, Whey Powder (**MILK**), Water, Glucose Syrup, Emulsifier (**SOYA** Lecithin), Colours (Curcumin, Anthocyanins), Beetroot Concentrate, Coconut Oil, Glazing Agent (Beeswax)], Vegetable Margarine [Palm Oil, Rapeseed Oil, Water, Emulsifier (E471), Natural Flavouring], Salted Butter [Butter (**MILK**), Salt].