

The information on the [Erudus System](#) has been supplied by the manufacturers of the products and, whilst the owners of the Erudus System take steps to ensure the information is regularly updated, they give no warranty and no guarantee that the information is accurate. Product information and ingredients may change, please always read product labels carefully in addition to using the information provided by Erudus One.

We do not accept liability for any inaccuracies or incorrect information contained on this site. Please visit <http://www.erudus.com/terms-and-conditions> for full terms and conditions.

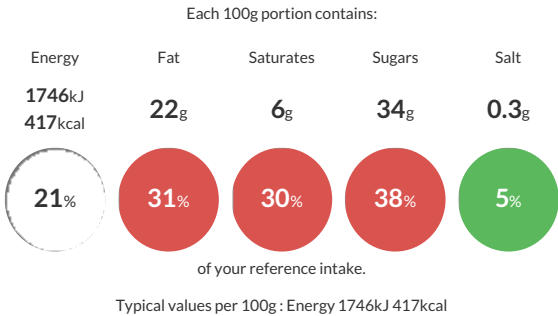
## Sysco Classic Coffee & Walnut Cake

Short Product Name:  
Coffee & Walnut Cake

Coffee & walnut sponge with coffee frosting & decorated with walnut pieces; pre-cut, 14 portions

Traded Unit GTIN: **5024333234814** Internal GTIN: Supplier : **Sysco GB Limited** Suppliers Product Code : **114808**

### Reference Intake



### Nutritional Information

Typical Values	Per 100g
Energy	1746kJ 417kCal
Carbohydrates	49g
of which sugars	34g
Fat	22g
of which saturates	6g
Fibre	0.7g
Protein	5.4g
Salt	0.3g

### Allergy Information

Key: **Contains** **May Contain**

  
Contains Cereal/Gluten

  
Contains Milk

  
Contains Eggs

  
Does Not Contain Peanuts

  
Contains Nuts

  
Does Not Contain Crustaceans

  
Does Not Contain Mustard

  
Does Not Contain Fish

  
Does Not Contain Lupin

  
Does Not Contain Sesame

  
Does Not Contain Celery

  
Contains Soya

  
Does Not Contain Molluscs

  
Does Not Contain Sulphur Dioxide

### Dietary Information

Key: **Suitable for**

  
Suitable for Vegetarian

  
May not be suitable for Vegan

  
May not be suitable for Kosher

  
May not be suitable for Halal

  
NO DATA for Coeliac

### Ingredients

Sugar, **Egg**, **Wheat** Flour (**Wheat** Flour, Calcium Carbonate, Niacin, Iron, Thiamin), Rapeseed Oil, Butter (**Milk**), Water, **Walnuts** (3.0%), Humectant (Glycerol), Margarine(Palm Oil, Rapeseed Oil, Water, Emulsifier (Mono- and Di-Glycerides of Fatty Acids)), Skimmed **Milk** Powder, Glucose Syrup, Coffee Powder (1.5%), Invert Sugar Syrup, Buttermilk, Raising Agents (Disodium Diphosphate, Potassium Hydrogen Carbonate), Modified Potato Starch, Emulsifiers (Mono- and Di-Glycerides of Fatty Acids, Sodium Stearoyl-2-Lactylate, Polyglycerol Esters of Fatty Acids), **Wheat** Gluten, Caramelised Sugar Syrup, **Soya** Flour, Stabiliser (Guar Gum), Flavouring, Preservative (Calcium Propionate), Acidity Regulator (Potassium Hydroxide).