

The information on the [Erudus System](#) has been supplied by the manufacturers of the products and, whilst the owners of the Erudus System take steps to ensure the information is regularly updated, they give no warranty and no guarantee that the information is accurate. Product information and ingredients may change, please always read product labels carefully in addition to using the information provided by Erudus One.

We do not accept liability for any inaccuracies or incorrect information contained on this site. Please visit <http://www.erudus.com/terms-and-conditions> for full terms and conditions.

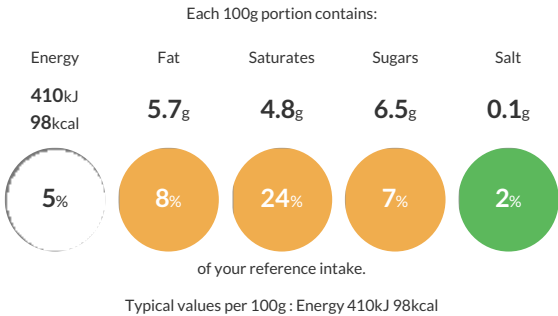
Little Jude's Blue Vanilla Ice Cream - 24 x 100ml

Short Product Name:  
Little Jude's Blue Vanilla Ice Cream - 24 x 100ml

Vanilla flavoured ice cream

Traded Unit GTIN: 05060081116736 Internal GTIN: 5060081116743 Supplier : Judes Ices Suppliers Product Code : F10248

Reference Intake



Nutritional Information

Typical Values	Per 100g
Energy	410kJ 98kCal
Carbohydrates	7.1g
of which sugars	6.5g
Fat	5.7g
of which saturates	4.8g
Fibre	-g
Protein	3.5g
Salt	0.1g


Allergy Information

Key: Contains May Contain

  
Does Not  
Contain  
Cereal/Gluten

  
Contains  
Milk

  
Contains  
Eggs

  
Does Not  
Contain  
Peanuts

  
Does Not  
Contain  
Nuts

  
Does Not  
Contain  
Crustaceans

  
Does Not  
Contain  
Mustard

  
Does Not  
Contain  
Fish

  
Does Not  
Contain  
Lupin

  
Does Not  
Contain  
Sesame

  
Does Not  
Contain  
Celery

  
Does Not  
Contain  
Soya

  
Does Not  
Contain  
Molluscs

  
Does Not  
Contain  
Sulphur  
Dioxide

Allergen Statement  
For allergens see ingredients in bold.

Ingredients

fresh whole **<b>milk</b>**, coconut oil, soluble corn fibre, fructose, **<b>milk</b>** protein concentrate, sugar, spirulina extract, fresh double cream (**<b>milk</b>**), emulsifier (mono- and diglycerides of fatty acids), stabilisers (locust bean gum, guar gum), natural flavouring, salt, pasteurised free range **<b>egg</b>** yolk.

Dietary Information

Key: Suitable for

  
Suitable for  
Vegetarian

  
May not be  
suitable for  
Vegan

  
May not be  
suitable for  
Kosher

  
May not be  
suitable for  
Halal

  
NO DATA for  
Coeliac