

The information on the [Erudus System](#) has been supplied by the manufacturers of the products and, whilst the owners of the Erudus System take steps to ensure the information is regularly updated, they give no warranty and no guarantee that the information is accurate. Product information and ingredients may change, please always read product labels carefully in addition to using the information provided by Erudus One.

We do not accept liability for any inaccuracies or incorrect information contained on this site. Please visit <http://www.erudus.com/terms-and-conditions> for full terms and conditions.

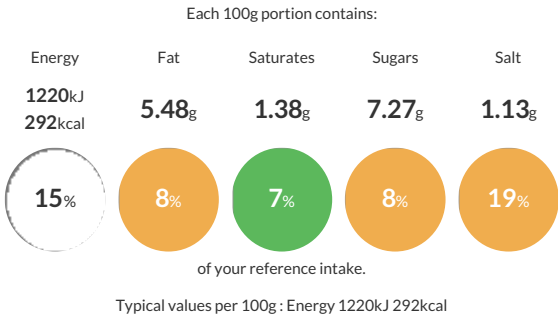
PARSLEY 6x100g

Short Product Name:
Parsley

Petroselinum crispum; Leaves of the plant, dried, rubbed and separated from the stalks and other foreign bodies, cleaned according to its technique afterwards and steam treated.

Traded Unit GTIN: 05020933117564 Internal GTIN: 5020933111098 Supplier : Sleaford Quality Foods Suppliers Product Code : PARS100V

Reference Intake



Nutritional Information

Typical Values	Per 100g
Energy	1220kJ 292kCal
Carbohydrates	23.94g
of which sugars	7.27g
Fat	5.48g
of which saturates	1.38g
Fibre	26.7g
Protein	26.63g
Salt	1.13g

Allergy Information

Key: Contains May Contain



Does Not Contain Cereal/Gluten



Does Not Contain Milk



Does Not Contain Eggs



Does Not Contain Peanuts



Does Not Contain Nuts



Does Not Contain Crustaceans



Does Not Contain Mustard



Does Not Contain Fish



Does Not Contain Lupin



Does Not Contain Sesame



Does Not Contain Celery



Does Not Contain Soya



Does Not Contain Molluscs



Does Not Contain Sulphur Dioxide

Gluten Claim
Gluten content is less than 20ppm.

Allergen Statement
Product is naturally gluten free, it is not sold with a gluten free claim and is not tested for gluten

Ingredients

Dried Parsley.

Dietary Information

Key: Suitable for



Suitable for Vegetarian



Suitable for Vegan



May not be suitable for Kosher



May not be suitable for Halal



Suitable for Coeliac