

Supplier's Product Code :
Product Added :
Last Updated by Supplier :
erudus id :

IB132
16 November 2018
29 October 2021
Ode35547e48d41a4a87663cc402f357d



The information on the Erudus System has been supplied by the manufacturers of the products and, whilst the owners of the Erudus System take steps to ensure the information is regularly updated, they give no warranty and no guarantee that the information is accurate. Product information and ingredients may change, please always read product labels carefully in addition to using the information provided by Erudus One.

We do not accept liability for any inaccuracies or incorrect information contained on this site. Please visit <http://www.erudus.com/terms-and-conditions> for full terms and conditions.

SB Frozen Chocolate Brownie Bar

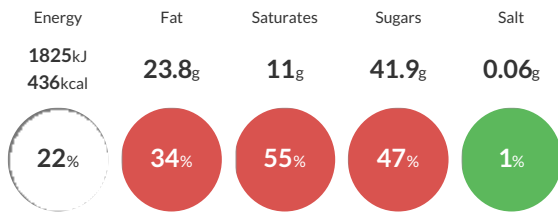
Short Product Name:

A Dense Brownie Baked with Belgian Chocolate.

Traded Unit GTIN: 5060082385988 Internal GTIN: 5060082383762 Supplier: Sussex Bakes Ltd T/A More Food Suppliers Product Code: IB132

Reference Intake

Each 100g portion contains:



of your reference intake.

Typical values per 100g : Energy 1825kJ 436kcal

Nutritional Information

Typical Values	Per 100g
Energy	1825kJ 436kCal
Carbohydrates	49.6g
of which sugars	41.9g
Fat	23.8g
of which saturates	11g
Fibre	3.7g
Protein	5.2g
Salt	0.06g

Allergy Information

Key: Contains May Contain



Allergen Statement

May contain nuts.

Ingredients

Sugar, Belgian Dark Chocolate Chips (18%) (Sugar, Cocoa Mass, Cocoa Butter, Emulsifier (SOYA Lecithin), Flavouring), Pasteurised Liquid Whole EGG, Palm Oil, Belgian Dark Chocolate Chunks (9%) (Cocoa Mass, Sugar, Emulsifier (SOYA Lecithin), Flavouring), Fortified Wheat Flour (WHEAT Flour, Calcium Carbonate, Iron, Niacin, Thiamin), Rapeseed Oil, Fat Reduced Cocoa Powder, Water, Emulsifier (Mono- and Diglycerides of Fatty Acids).

Dietary Information

Key: Suitable for

