

The information on the [Erudus System](#) has been supplied by the manufacturers of the products and, whilst the owners of the Erudus System take steps to ensure the information is regularly updated, they give no warranty and no guarantee that the information is accurate. Product information and ingredients may change, please always read product labels carefully in addition to using the information provided by Erudus One.

We do not accept liability for any inaccuracies or incorrect information contained on this site. Please visit <http://www.erudus.com/terms-and-conditions> for full terms and conditions.

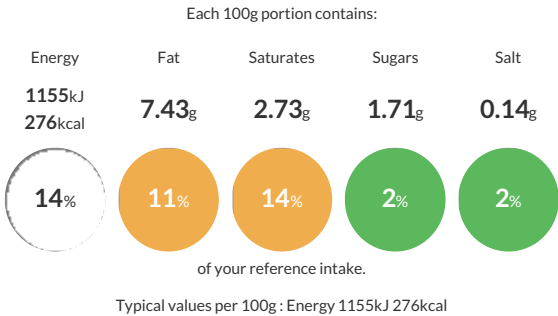
THYME 6x210g

Short Product Name:
THYME

Thymus vulgaris; and its relevant sub species. Leaves of the plant, dried, rubbed and separated from the stalks and other foreign bodies, cleaned according to its technique afterwards and steam treated.

Traded Unit GTIN: 5020933117595 Internal GTIN: 5020933111128 Supplier : Sleaford Quality Foods Suppliers Product Code : THYME210V

Reference Intake



Nutritional Information

Typical Values	Per 100g
Energy	1155kJ 276kCal
Carbohydrates	26.94g
of which sugars	1.71g
Fat	7.43g
of which saturates	2.73g
Fibre	37g
Protein	9.11g
Salt	0.14g

Allergy Information

Key: Contains May Contain


Does Not Contain Cereal/Gluten


Does Not Contain Milk


Does Not Contain Eggs


Does Not Contain Peanuts


Does Not Contain Nuts


Does Not Contain Crustaceans


Does Not Contain Mustard


Does Not Contain Fish


Does Not Contain Lupin


Does Not Contain Sesame


Does Not Contain Celery


Does Not Contain Soya


Does Not Contain Molluscs


Does Not Contain Sulphur Dioxide

Dietary Information

Key: Suitable for


Suitable for Vegetarian


Suitable for Vegan


Suitable for Kosher


Suitable for Halal


Suitable for Coeliac

Ingredients

Dried Thyme.