

Supplier's Product Code : 1.013
 Product Added : 18 January 2022
 Last Updated by Supplier : 18 January 2022
 erudus id : 0f9e1ac0294649cf943f27563d694897



The information on the Erudus System has been supplied by the manufacturers of the products and, whilst the owners of the Erudus System take steps to ensure the information is regularly updated, they give no warranty and no guarantee that the information is accurate. Product information and ingredients may change, please always read product labels carefully in addition to using the information provided by Erudus One.

We do not accept liability for any inaccuracies or incorrect information contained on this site. Please visit <http://www.erudus.com/terms-and-conditions> for full terms and conditions.

Bottle Up. Reusable bottle filled with spring water (pink)

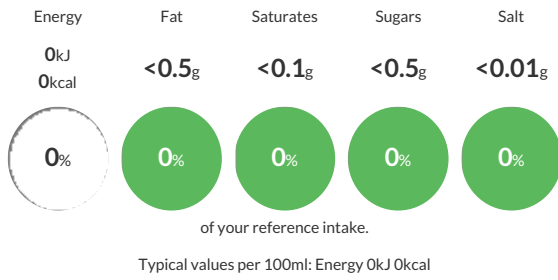
Short Product Name:
 Bottle Up Pink

British spring water in Reusable bottle, made from Sugar Cane. BPA free, 100% recyclable and embossed bottle.

Traded Unit GTIN: **8719327243602** Internal GTIN: **8719327113721** Supplier : **Bottle Up** Suppliers Product Code : **1.013**

Reference Intake

Each 100ml portion contains:



Nutritional Information

Typical Values	Per 100ml
Energy	0kJ 0kCal
Carbohydrates	<0.5g
of which sugars	<0.5g
Fat	<0.5g
of which saturates	<0.1g
Fibre	-g
Protein	<0.5g
Salt	<0.01g

Allergy Information

Key: **Contains** **May Contain**

Does Not Contain Cereal/Gluten	Does Not Contain Milk	Does Not Contain Eggs	Does Not Contain Peanuts	Does Not Contain Nuts	Does Not Contain Crustaceans	Does Not Contain Mustard
Does Not Contain Fish	Does Not Contain Lupin	Does Not Contain Sesame	Does Not Contain Celery	Does Not Contain Soya	Does Not Contain Molluscs	Does Not Contain Sulphur Dioxide

Dietary Information

Key: **Suitable for**

Suitable for Vegetarian	Suitable for Vegan	Suitable for Kosher	Suitable for Halal	Suitable for Coeliac
-------------------------	--------------------	---------------------	--------------------	----------------------

Gluten Claim

Gluten content is less than 20ppm.

Ingredients

Spring Water