

The information on the [Erudus System](#) has been supplied by the manufacturers of the products and, whilst the owners of the Erudus System take steps to ensure the information is regularly updated, they give no warranty and no guarantee that the information is accurate. Product information and ingredients may change, please always read product labels carefully in addition to using the information provided by Erudus One.

We do not accept liability for any inaccuracies or incorrect information contained on this site. Please visit <http://www.erudus.com/terms-and-conditions> for full terms and conditions.

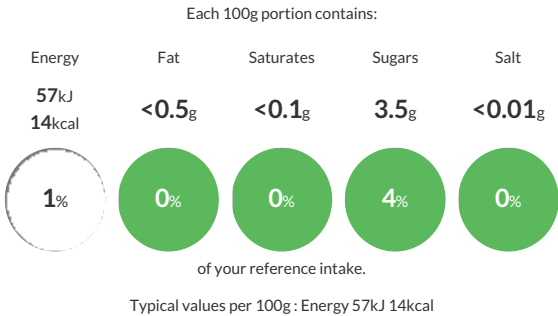
Wibble Low Sugar Forest Fruit Vegan Jelly Crystals

Short Product Name:
Low Sugar Forest Fruit flavour vegan jelly crystals

Low sugar, Forest Fruit vegan jelly crystals

Traded Unit GTIN: 05060666570830 Internal GTIN: 5060666570441 Supplier : Wibble Foods Ltd Suppliers Product Code : WIB-CAT-FF-4

Reference Intake



Nutritional Information

Typical Values	Per 100g
Energy	57kJ 14kCal
Carbohydrates	8.5g
of which sugars	3.5g
Fat	<0.5g
of which saturates	<0.1g
Fibre	<0.5g
Protein	<0.5g
Salt	<0.01g

Allergy Information

Key: Contains May Contain


Does Not Contain Cereal/Gluten


Does Not Contain Milk


Does Not Contain Eggs


Does Not Contain Peanuts


Does Not Contain Nuts


Does Not Contain Crustaceans


Does Not Contain Mustard


Does Not Contain Fish


Does Not Contain Lupin


Does Not Contain Sesame


Does Not Contain Celery


Does Not Contain Soya


Does Not Contain Molluscs


Does Not Contain Sulphur Dioxide

Dietary Information

Key: Suitable for


Suitable for Vegetarian


Suitable for Vegan


NO DATA for Kosher


NO DATA for Halal


NO DATA for Coeliac

Ingredients

Sweeteners (Erythritol, Stevia Extract), Fruit Sugar, Acidity Regulators (Potassium Citrate, Citric Acid), Gelling Agent: Carrageenan, Natural Forest Fruits Flavouring, Natural Colouring (Red Beet).