

The information on the [Erudus System](#) has been supplied by the manufacturers of the products and, whilst the owners of the Erudus System take steps to ensure the information is regularly updated, they give no warranty and no guarantee that the information is accurate. Product information and ingredients may change, please always read product labels carefully in addition to using the information provided by Erudus One.

We do not accept liability for any inaccuracies or incorrect information contained on this site. Please visit <http://www.erudus.com/terms-and-conditions> for full terms and conditions.

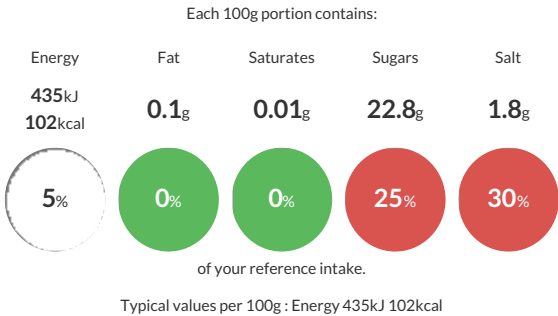
Heinz Tomato Ketchup Dip Pot (100) 25g

Short Product Name:
Tomato Ketchup

Tomato ketchup

Traded Unit GTIN: 05413226550122 Internal GTIN: 5413226550122 Supplier : H.J. Heinz Suppliers Product Code : 76003274

Reference Intake



Nutritional Information

Typical Values	Per 100g
Energy	435kJ 102kCal
Carbohydrates	23.2g
of which sugars	22.8g
Fat	0.1g
of which saturates	0.01g
Fibre	-g
Protein	1.2g
Salt	1.8g

Allergy Information

Key: Contains May Contain


Does Not Contain Cereal/Gluten


Does Not Contain Milk


Does Not Contain Eggs


Does Not Contain Peanuts


Does Not Contain Nuts


Does Not Contain Crustaceans


Does Not Contain Mustard


Does Not Contain Fish


Does Not Contain Lupin


Does Not Contain Sesame


Contains Celery


Does Not Contain Soya


Does Not Contain Molluscs


Does Not Contain Sulphur Dioxide

Dietary Information

Key: Suitable for


Suitable for Vegetarian


May not be suitable for Vegan


May not be suitable for Kosher


May not be suitable for Halal


NO DATA for Coeliac

Ingredients

Tomatoes (148g per 100g Tomato Ketchup), spirit vinegar, sugar, salt, spice and herb extracts (contain **CELERY**), spice.