

The information on the [Erudus System](#) has been supplied by the manufacturers of the products and, whilst the owners of the Erudus System take steps to ensure the information is regularly updated, they give no warranty and no guarantee that the information is accurate. Product information and ingredients may change, please always read product labels carefully in addition to using the information provided by Erudus One.

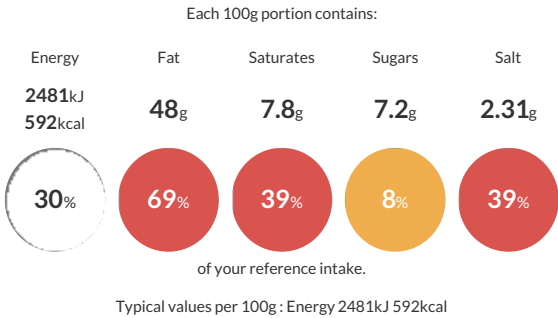
We do not accept liability for any inaccuracies or incorrect information contained on this site. Please visit <http://www.erudus.com/terms-and-conditions> for full terms and conditions.

Smokehouse Mix 1kg

Mix of cashews, (coated) peanuts, macadamia and almonds with smoke flavouring

Traded Unit GTIN: 5060103912759 Internal GTIN: 5060103912469 Supplier : Centaur Foods Ltd Suppliers Product Code : LFJ054

Reference Intake



Nutritional Information

Typical Values	Per 100g
Energy	2481kJ 592kCal
Carbohydrates	16g
of which sugars	7.2g
Fat	48g
of which saturates	7.8g
Fibre	7g
Protein	20.5g
Salt	2.31g

Allergy Information

Key: Contains May Contain

Dietary Information

Key: Suitable for

Allergen Statement
This product contains PEANUTS, ALMONDS, CASHEW NUTS, MACADAMIA NUTS, WHEAT, May contain SESAME SEEDS

Ingredients

PEANUTS (54%), ALMONDS (11%), CASHEW NUTS (9%), MACADAMIA NUTS (9%), Sunflower oil, WHEAT flour, Potato starch, Dextrose, Salt, Smoke seasoning (flavouring, smoke flavouring, salt, dextrose, Rapeseed oil, maltodextrin, Preservative E327, Emulsifier E414, Sugar, Yeast extract, smoke flavouring, Caramelised sugar, Stabiliser E500). Garlic powder, Onion powder, Citric acid, Paprika extract.