

Supplier's Product Code : 62740466
 Product Added : 01 July 2026
 Last Updated by Supplier : 01 July 2026
 erudus id : 136c2f52243646d7ad4e1b81fd57c3fa



The information on the **Erudus System** has been supplied by the manufacturers of the products and, whilst the owners of the Erudus System take steps to ensure the information is regularly updated, they give no warranty and no guarantee that the information is accurate. Product information and ingredients may change, please always read product labels carefully in addition to using the information provided by Erudus One.

We do not accept liability for any inaccuracies or incorrect information contained on this site. Please visit <http://www.erudus.com/terms-and-conditions> for full terms and conditions.

Ben & Jerry's Non-Dairy Cookie on Cookie Dough Ice Cream 100ml

Short Product Name:

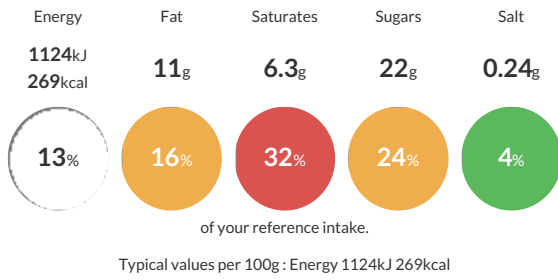
Ben & Jerry's Non-Dairy Cookie on Cookie Dough Ice Cream 100ml

Non-dairy caramel ice cream with cookie swirls (10%), and chocolate chip cookie dough (16%)

Traded Unit GTIN: **8711327626164** Internal GTIN: **8711327626133** Supplier: **Magnum ICC UK Ltd** Suppliers Product Code: **62740466**

Reference Intake

Each 100g portion contains:



Nutritional Information

| Typical Values | Per 100g |
|--------------------|-------------------|
| Energy | 1124kJ 269kCal |
| Carbohydrates | 40g |
| of which sugars | 22g |
| Fat | 11g |
| of which saturates | 6.3g |
| Fibre | -g |
| Protein | 1.8g |
| Salt | 0.24g |

Allergy Information

Key: **Contains** **May Contain**

| | | | | | | |
|------------------------|------------------------|-------------------------|--------------------------|-----------------------|------------------------------|----------------------------------|
| Contains Cereal/Gluten | Does Not Contain Milk | Does Not Contain Eggs | Does Not Contain Peanuts | Does Not Contain Nuts | Does Not Contain Crustaceans | Does Not Contain Mustard |
| Does Not Contain Fish | Does Not Contain Lupin | Does Not Contain Sesame | Does Not Contain Celery | Contains Soya | Does Not Contain Molluscs | Does Not Contain Sulphur Dioxide |

Dietary Information

Key: **Suitable for**

| | | | | |
|-------------------------|-------------------|---------------------|--------------------|---------------------|
| Suitable for Vegetarian | NO DATA for Vegan | Suitable for Kosher | Suitable for Halal | NO DATA for Coeliac |
|-------------------------|-------------------|---------------------|--------------------|---------------------|

Allergen Statement

> Sugar, cocoa, vanilla: mass balance is used to match Fairtrade sourcing. Total 21%F. FVisit info.fairtrade.net/sourcing

Ingredients

Ingredients: Water, sugar, glucose syrup, flours (**WHEAT**, whole **WHEAT**), oat syrup (water, **OATS** (2.5%)), coconut fat, vegetable oils (fully refined soybean, rapeseed), brown sugar, corn starch, cocoa mass, pea protein, cocoa butter, fava bean protein, salt, stabilisers (guar gum, locust bean gum), molasses, emulsifiers (lecithins (contain **SOY**)), vanilla extract, raising agent (sodium bicarbonate). >