

Supplier's Product Code :
Product Added :
Last Updated by Supplier :
erudus id :

F03010 (7890)
01 April 2026
01 April 2026
14bef81fc2ae4446aefad3bcef3d1607



The information on the Erudus System has been supplied by the manufacturers of the products and, whilst the owners of the Erudus System take steps to ensure the information is regularly updated, they give no warranty and no guarantee that the information is accurate. Product information and ingredients may change, please always read product labels carefully in addition to using the information provided by Erudus One.

We do not accept liability for any inaccuracies or incorrect information contained on this site. Please visit <http://www.erudus.com/terms-and-conditions> for full terms and conditions.

Chocolate Fudge Cake 2 Layer Gateau

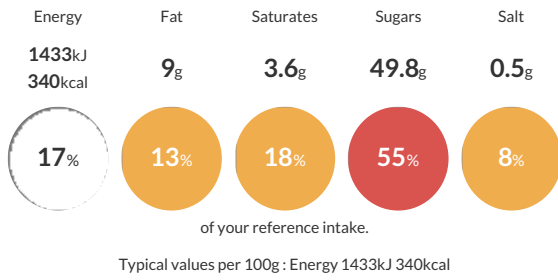
Short Product Name:
Chocolate Fudge Cake

A two-layer gateau made with a light textured chocolate sponge, filled and covered with chocolate fudge icing decorated with a swirled pattern. Whole

Traded Unit GTIN: 05010823510216 Internal GTIN: 5010823100936 Supplier: Mademoiselle Desserts (Taunton) Suppliers Product Code: F03010 (7890)

Reference Intake

Each 100g portion contains:



Nutritional Information

Typical Values	Per 100g
Energy	1433kJ 340kCal
Carbohydrates	60.6g
of which sugars	49.8g
Fat	9g
of which saturates	3.6g
Fibre	2.9g
Protein	4.3g
Salt	0.5g

Allergy Information

Key: Contains May Contain



Dietary Information

Key: Suitable for



Ingredients

Chocolate Fudge (53.5%) [Sugar, Water, Shortening (Palm Oil, Rapeseed Oil, Emulsifier (E471)), Fat Reduced Cocoa Powder (5.5%), Glucose Syrup, Emulsifiers (E471, E475)], Sugar, WHEAT Flour (with Calcium Carbonate, Niacin, Iron, Folic Acid, Thiamin), Whole EGG, Water, Fat Reduced Cocoa Powder (2%), Raising Agents (E450i, E500ii), Whey Powder (MILK), Skimmed MILK Powder, Emulsifiers (E471, E475), Modified Potato Starch, WHEAT Flour, Stabilisers (E415, E412), Dextrose.