

The information on the [Erudus System](#) has been supplied by the manufacturers of the products and, whilst the owners of the Erudus System take steps to ensure the information is regularly updated, they give no warranty and no guarantee that the information is accurate. Product information and ingredients may change, please always read product labels carefully in addition to using the information provided by Erudus One.

We do not accept liability for any inaccuracies or incorrect information contained on this site. Please visit <http://www.erudus.com/terms-and-conditions> for full terms and conditions.

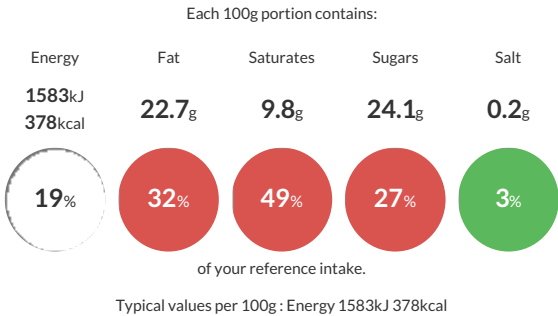
7196 - Individual Banana Banoffi Tart (16)

Short Product Name:
Banana Banoffi Tart

Sweet pastry case filled with sliced bananas, toffee sauce, banana flavoured cream and decorated with milk chocolate shavings.

Traded Unit GTIN: 5060622441549 Internal GTIN: Supplier: Eatons Patisserie Suppliers Product Code: 7196 187134

Reference Intake



Nutritional Information

Typical Values	Per 100g
Energy	1583kJ 378kCal
Carbohydrates	38.9g
of which sugars	24.1g
Fat	22.7g
of which saturates	9.8g
Fibre	1.4g
Protein	4.3g
Salt	0.2g

Allergy Information

Key: Contains May Contain

Contains Cereal/Gluten

Contains Milk

Contains Eggs

Does Not Contain Peanuts

May Contain Nuts

Does Not Contain Crustaceans

Does Not Contain Mustard

Does Not Contain Fish

Does Not Contain Lupin

Does Not Contain Sesame

Does Not Contain Celery

Contains Soya

Does Not Contain Molluscs

May Contain Sulphur Dioxide

Dietary Information

Key: Suitable for

May not be suitable for Vegetarian

May not be suitable for Vegan

May not be suitable for Kosher

May not be suitable for Halal

NO DATA for Coeliac

Ingredients

Banoffee Toffee Sauce (15%) [Sweetened Condensed MILK [MILK, Sugar, Lactose (MILK)], Golden Syrup [Partially Inverted Refiners Syrup], Glucose Syrup, Palm Kernel, Water, Unsalted Butter [MILK], Sugar, Palm Oil, Gelling Agent [Pectin E440], Emulsifiers [Rapeseed Lecithin E322, Sorbitan Tri-Stearate E492], Dried Glucose Syrup, Salt, Preservative [Potassium Sorbate E202]], Bananas (15%), Shortcrust Sweet Tart [WHEAT Flour [GLUTEN], Vegetable Fats and Oils [Palm, Coconut, Rapeseed, Colour (Carotenes E160a)], Sugar, Free Range EGG, Water, Salt, Skimmed MILK Powder], Cream [MILK], MILK Chocolate Shavings [Sugar, Cocoa Mass, Cocoa Butter, Whole MILK Powder, Skimmed MILK Powder, Emulsifier (SOYA Lecithin), Natural Vanilla Flavouring], Banana Purée (2%) [Bananas], Cream Stabiliser [Sugar, Dried Glucose Syrup, Gelatine, Modified Starch (Acetylated Distarch Phosphate E1414), EGG Yolk Powder, Acidity Regulator (Disodium Diphosphate E450i),Salt], Dark Chocolate [Cocoa Mass, Sugar, Cocoa Butter, Emulsifier (SOYA Lecithin), Natural Vanilla Flavouring], Sugar, Caramel Paste [Glucose Syrup, Caramelised Sugar (35%), Invert Sugar Syrup, Natural Flavouring], Lemon Juice Concentrate