

The information on the [Erudus System](#) has been supplied by the manufacturers of the products and, whilst the owners of the Erudus System take steps to ensure the information is regularly updated, they give no warranty and no guarantee that the information is accurate. Product information and ingredients may change, please always read product labels carefully in addition to using the information provided by Erudus One.

We do not accept liability for any inaccuracies or incorrect information contained on this site. Please visit <http://www.erudus.com/terms-and-conditions> for full terms and conditions.

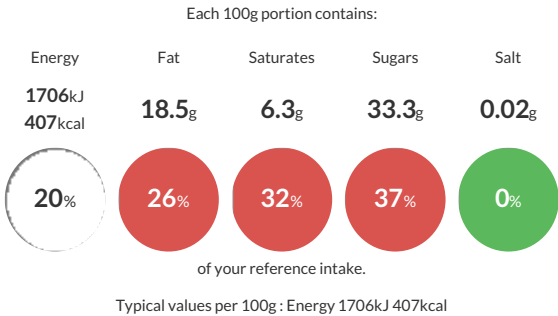
Plant Based Bakewell Tart (1 x 14)

Short Product Name:  
Plant Based Bakewell Tart (1 x 14)

Crisp Sweet Pastry layered with fruity Plum & Raspberry Jam, Almond Frangipane and topped with a sweet Almond Fondant topping and a Chocolate Decoration

Traded Unit GTIN: **5060069386649** Internal GTIN: Supplier: **Mademoiselle Desserts (Taunton)** Suppliers Product Code: **F95030**

Reference Intake



Nutritional Information

Typical Values	Per 100g
Energy	1706kJ 407kCal
Carbohydrates	57g
of which sugars	33.3g
Fat	18.5g
of which saturates	6.3g
Fibre	2g
Protein	3.9g
Salt	0.02g

Allergy Information

Key: Contains May Contain

  
Contains  
Cereal/Gluten

  
May Contain  
Milk

  
May Contain  
Eggs

  
Does Not  
Contain  
Peanuts

  
Contains  
Nuts

  
Does Not  
Contain  
Crustaceans

  
Does Not  
Contain  
Mustard

  
Does Not  
Contain  
Fish

  
Does Not  
Contain  
Lupin

  
Does Not  
Contain  
Sesame

  
Does Not  
Contain  
Celery

  
Contains  
Soya

  
Does Not  
Contain  
Molluscs

  
Does Not  
Contain  
Sulphur  
Dioxide

Dietary Information

Key: Suitable for

  
Suitable for  
Vegetarian

  
Suitable for  
Vegan

  
May not be  
suitable for  
Kosher

  
May not be  
suitable for  
Halal

  
NO DATA for  
Coeliac

Ingredients

<b>WHEAT </b>Flour (<b>WHEAT </b>Flour, Calcium Carbonate, Niacin, Iron, Folic Acid, Thiamin), Powdered Fondant (Sugar, Dried Glucose Syrup), Sugar, Plum & Raspberry Jam (9%) (Glucose-Fructose Syrup, Plum (From Concentrate), Raspberry (From Concentrate), Gelling Agent: Pectin; Acidity Regulators: Citric Acid, Sodium Citrate; Colour: Anthocyanins; Flavouring), Water, Margarine (Palm Oil, Rapeseed Oil, Water, Emulsifier: Mono- And Diglycerides Of Fatty Acids), Ground **ALMOND** (6%) (<b>NUT</b>), Shortening (Palm Oil, Rapeseed Oil), Coconut Milk (Coconut Extract, Water), Margarine (Palm Oil, Rapeseed Oil, Water, Flavouring), Vegan Dark Couverture Chocolate (Cocoa Mass, Sugar, Cocoa Butter, Emulsifier: <b>SOYA</b> Lecithin; Natural Vanilla Flavouring), Modified Waxy Maize Starch, Golden Flaxseed, Pastry Stabiliser (<b>WHEAT </b>Flour (<b>WHEAT </b>Flour, Calcium Carbonate, Niacin, Iron, Folic Acid, Thiamin), Flour Treatment Agent: L- Cysteine), Raising Agent: Sodium Bicarbonate, Natural Almond Flavouring, Thickeners: Guar Gum, Xanthan Gum