

The information on the [Erudus System](#) has been supplied by the manufacturers of the products and, whilst the owners of the Erudus System take steps to ensure the information is regularly updated, they give no warranty and no guarantee that the information is accurate. Product information and ingredients may change, please always read product labels carefully in addition to using the information provided by Erudus One.

We do not accept liability for any inaccuracies or incorrect information contained on this site. Please visit <http://www.erudus.com/terms-and-conditions> for full terms and conditions.

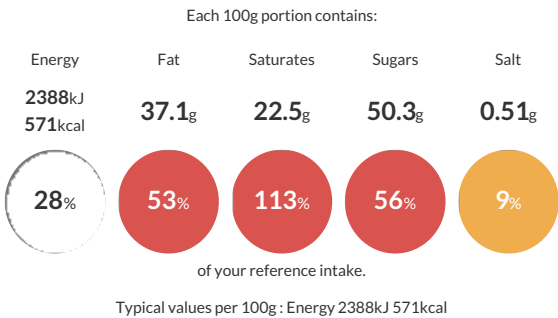
COUVERTURES - GOLD - CALLETS - 2,5 KG BAG

Short Product Name:
COUVERTURES - GOLD - CALLETS - 2,5 KG BAG

The new colour and taste in Finest Belgian Chocolate

Traded Unit GTIN: 5410522555240 Internal GTIN: 5410522555257 Supplier : Barry Callebaut Belgium NV & IBC Belgium Suppliers Product Code : CHK-R30GOLD-E4-U70

Reference Intake



Nutritional Information

Typical Values	Per 100g
Energy	2388kJ 571kCal
Carbohydrates	50.8g
of which sugars	50.3g
Fat	37.1g
of which saturates	22.5g
Fibre	0g
Protein	8g
Salt	0.51g

Allergy Information

Key: Contains May Contain

Gluten < 20ppm
Does Not Contain Cereal/Gluten

Contains Milk

Does Not Contain Eggs

Does Not Contain Peanuts

Does Not Contain Nuts

Does Not Contain Crustaceans

Does Not Contain Mustard

Does Not Contain Fish

Does Not Contain Lupin

Does Not Contain Sesame

Does Not Contain Celery

Contains Soya

Does Not Contain Molluscs

Does Not Contain Sulphur Dioxide

Gluten Claim
Gluten content is less than 20ppm.

Allergen Statement
Contains MILK

Ingredients

cocoa butter 30,0%; sugar 29,0%; whole milk powder 25,0%; milk sugar 5,5%; whey powder (milk) 5,0%; skimmed milk powder 2,5%; caramelised sugar 2,0%; emulsifier: lecithins (soya) < 1%; natural vanilla flavouring < 1%; salt < 1%

Dietary Information

Key: Suitable for

Suitable for Vegetarian

May not be suitable for Vegan

Suitable for Kosher

Suitable for Halal

Suitable for Coeliac