

The information on the [Erudus System](#) has been supplied by the manufacturers of the products and, whilst the owners of the Erudus System take steps to ensure the information is regularly updated, they give no warranty and no guarantee that the information is accurate. Product information and ingredients may change, please always read product labels carefully in addition to using the information provided by Erudus One.

We do not accept liability for any inaccuracies or incorrect information contained on this site. Please visit <http://www.erudus.com/terms-and-conditions> for full terms and conditions.

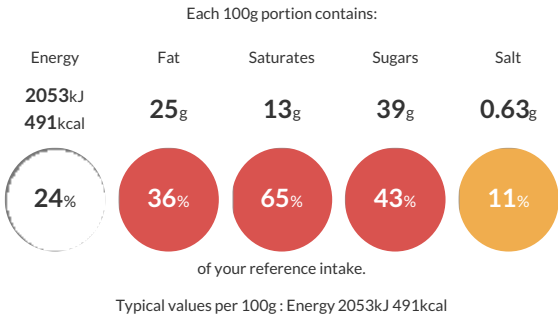
La Boulangerie White Belgian Chocolate Chunk & Raspberry Cookies

Short Product Name:
White Belgian Chocolate Chunk & Raspberry Cookies

A butter enriched, vanilla flavour cookie with chunks of white Belgian chocolate & freeze dried raspberry pieces; 30x76g approx.

Traded Unit GTIN: 5024333179429 Internal GTIN: Supplier : Sysco GB Limited Suppliers Product Code : 34334

Reference Intake



Nutritional Information

Typical Values	Per 100g
Energy	2053kJ 491kCal
Carbohydrates	62g
of which sugars	39g
Fat	25g
of which saturates	13g
Fibre	1.1g
Protein	4.7g
Salt	0.63g

Allergy Information

Key: Contains May Contain


Contains Cereal/Gluten


Contains Milk


Contains Eggs


Does Not Contain Peanuts


Does Not Contain Nuts


Does Not Contain Crustaceans


Does Not Contain Mustard


Does Not Contain Fish


Does Not Contain Lupin


Does Not Contain Sesame


Does Not Contain Celery


Contains Soya


Does Not Contain Molluscs


Does Not Contain Sulphur Dioxide

Dietary Information

Key: Suitable for


Suitable for Vegetarian


May not be suitable for Vegan


May not be suitable for Kosher


May not be suitable for Halal


NO DATA for Coeliac

Ingredients

WHEAT Flour (with Calcium, Iron, Niacin, Thiamin), Sugar, White Chocolate (21%)(Sugar, Cocoa Butter, Whole MILK Powder, Emulsifier(SOYA Lecithin), Flavouring), Butter (MILK) (10%), Palm Oil, Rapeseed Oil, Invert Sugar Syrup, Freeze-dried Raspberries (1.0%), EGG Powder, Raising Agents(Sodium Bicarbonate, Disodium Diphosphate), Skimmed MILK Powder, Cane Molasses, Salt, Emulsifiers(Mono- and Di-Glycerides of Fatty Acids), Stabiliser(Xanthan Gum), Flavouring.