

The information on the [Erudus System](#) has been supplied by the manufacturers of the products and, whilst the owners of the Erudus System take steps to ensure the information is regularly updated, they give no warranty and no guarantee that the information is accurate. Product information and ingredients may change, please always read product labels carefully in addition to using the information provided by Erudus One.

We do not accept liability for any inaccuracies or incorrect information contained on this site. Please visit <http://www.erudus.com/terms-and-conditions> for full terms and conditions.

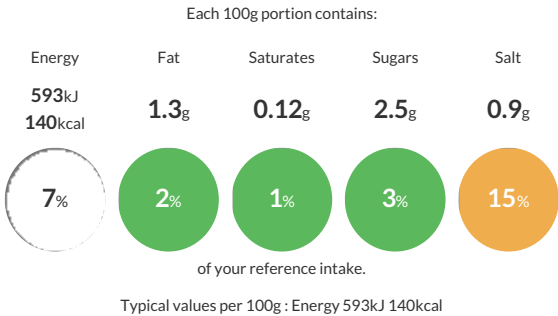
Whitby Plaice Goujon 10*450g

Short Product Name:
Plaice Goujon

100% plaice fillet strips in a crisp, golden crumb.

Traded Unit GTIN: 05016316936006 Internal GTIN: 5016316036003 Supplier : Whitby Seafoods Ltd Suppliers Product Code : 3600

Reference Intake



Nutritional Information

Typical Values	Per 100g
Energy	593kJ 140kCal
Carbohydrates	22.7g
of which sugars	2.5g
Fat	1.3g
of which saturates	0.12g
Fibre	2.1g
Protein	10.9g
Salt	0.9g

Allergy Information

Key: Contains May Contain



Contains Cereal/Gluten



Does Not Contain Milk



Does Not Contain Eggs



Does Not Contain Peanuts



Does Not Contain Nuts



May Contain Crustaceans



Does Not Contain Mustard



Contains Fish



Does Not Contain Lupin



Does Not Contain Sesame



Does Not Contain Celery



Does Not Contain Soya



May Contain Molluscs



Does Not Contain Sulphur Dioxide

Dietary Information

Key: Suitable for



May not be suitable for Vegetarian



May not be suitable for Vegan



May not be suitable for Kosher



May not be suitable for Halal



May not be suitable for Coeliac

Allergen Statement
For allergens including cereals containing **GLUTEN** please see ingredients in **CAPITALS (Bold)**. May also contain **CRUSTACEANS** and **MOLLUSCS**.

Ingredients

Plaice (**FISH**) (50%), Breadcrumbs (**WHEAT** Flour (**WHEAT** Flour, Calcium Carbonate, Iron, Thiamine, Niacin) Rapeseed Oil, Yeast, Salt), Batter (Water, **WHEAT** Flour (**WHEAT** Flour, Calcium Carbonate, Iron, Thiamine, Niacin), Salt).