

Supplier's Product Code :  
Product Added :  
Last Updated by Supplier :  
erudus id :

10001826  
30 March 2026  
30 March 2026  
17d4e14fc27a42d5b5074507145b688e



The information on the Erudus System has been supplied by the manufacturers of the products and, whilst the owners of the Erudus System take steps to ensure the information is regularly updated, they give no warranty and no guarantee that the information is accurate. Product information and ingredients may change, please always read product labels carefully in addition to using the information provided by Erudus One.

We do not accept liability for any inaccuracies or incorrect information contained on this site. Please visit <http://www.erudus.com/terms-and-conditions> for full terms and conditions.

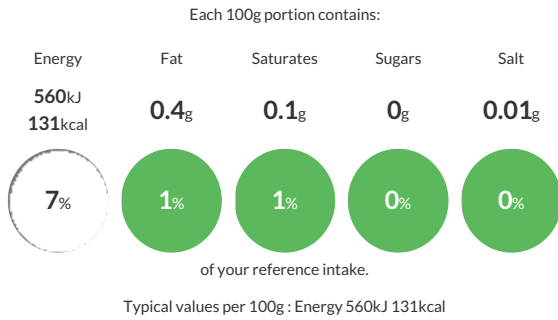
## Ardo White Rice 4x2.5kg

Short Product Name:  
Long Grain White Rice

The product shall be prepared from the species Oryza Sativa, and shall be free-flowing. The texture of the thawed rice shall be 'al dente', i.e. firm to the bite but without hardness in the grain and not be soft as to be overcooked. The product shall be white to light grey, typical of cooked rice. The product shall be free from off-flavours. Prior to delivery the material shall be metal detected and inspected to ensure compliance with this specification and to remove any foreign material.

Traded Unit GTIN: 05411361280706 Internal GTIN: 5411361280706 Supplier: Ardo UK Suppliers Product Code: 10001826

### Reference Intake



### Nutritional Information

Typical Values	Per 100g
Energy	560kJ 131kCal
Carbohydrates	34.7g
of which sugars	0g
Fat	0.4g
of which saturates	0.1g
Fibre	0.5g
Protein	2.8g
Salt	0.01g

### Allergy Information

Key: Contains May Contain



### Dietary Information

Key: Suitable for



### Ingredients

Long Grain rice (100%)