

The information on the [Erudus System](#) has been supplied by the manufacturers of the products and, whilst the owners of the Erudus System take steps to ensure the information is regularly updated, they give no warranty and no guarantee that the information is accurate. Product information and ingredients may change, please always read product labels carefully in addition to using the information provided by Erudus One.

We do not accept liability for any inaccuracies or incorrect information contained on this site. Please visit <http://www.erudus.com/terms-and-conditions> for full terms and conditions.

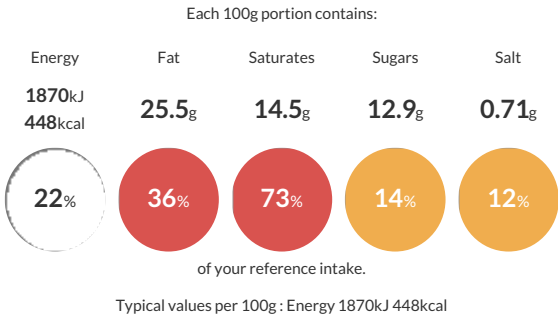
Chocolate Croissant

Short Product Name:
Chocolate Croissant

An unbaked, frozen, pre-proved all butter croissant with a chocolate filling, topped with chocolate nibs.

Traded Unit GTIN: 05413056003911 Internal GTIN: Supplier: Lantmannen Unibake Suppliers Product Code: 5790008009 (Q009)

Reference Intake



Nutritional Information

Typical Values	Per 100g
Energy	1870kJ 448kCal
Carbohydrates	44g
of which sugars	12.9g
Fat	25.5g
of which saturates	14.5g
Fibre	3g
Protein	9g
Salt	0.71g

Allergy Information

Key: Contains May Contain


Contains Cereal/Gluten


Contains Milk


Contains Eggs


Does Not Contain Peanuts


May Contain Nuts


Does Not Contain Crustaceans


Does Not Contain Mustard


Does Not Contain Fish


Does Not Contain Lupin


Does Not Contain Sesame


Does Not Contain Celery


Contains Soya


Does Not Contain Molluscs


Does Not Contain Sulphur Dioxide

Dietary Information

Key: Suitable for


Suitable for Vegetarian


May not be suitable for Vegan


May not be suitable for Kosher


Suitable for Halal


NO DATA for Coeliac

Allergen Statement
For allergens, including cereals containing gluten, see ingredients in capitals. May also contain traces of nuts.

Ingredients

INGREDIENTS: Dough: **WHEAT** flour (**WHEAT** Gluten), Water, Butter (**MILK**) (15,9%), Yeast, Sugar, Baking Improver (**WHEAT** Gluten, **WHEAT** Flour, Flour Treatment Agent (Ascorbic Acid E300), Enzyme), Salt, **EGG**. Filling: Chocolate Flavoured Filling (18,9%) (Sugar, Sunflower oil, Fat-reduced cocoa powder, Vegetable fat (Palm fat, Palm kernel), Skimmed **MILK** powder, Natural flavouring (Rosemary extract), Emulsifier (**SOYA** Lecithin E322)). Topping: Chocolate (3,2%) (cocoa solids: 35% minimum) (Sugar, Cocoa mass, Cocoa butter, Emulsifier (**SOYA** Lecithin E322)), **EGG**.