

Supplier's Product Code :
 Product Added :
 Last Updated by Supplier :
 erudus id :

14632
 23 February 2026
 24 February 2026
 1930f09a8fb249d2b511f1a439ebd155



The information on the Erudus System has been supplied by the manufacturers of the products and, whilst the owners of the Erudus System take steps to ensure the information is regularly updated, they give no warranty and no guarantee that the information is accurate. Product information and ingredients may change, please always read product labels carefully in addition to using the information provided by Erudus One.

We do not accept liability for any inaccuracies or incorrect information contained on this site. Please visit <http://www.erudus.com/terms-and-conditions> for full terms and conditions.

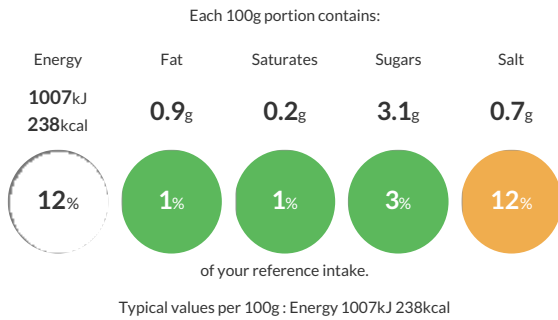
800g 19+2 MWG D Tin Bloomer

Short Product Name:
 800g 19+2 MWG D Tin Bloomer

Brown bread with malted wheat flakes, barley malt flour and buckwheat

Traded Unit GTIN: 5011579650195 Internal GTIN: Supplier: Roberts Bakery 1887 Ltd Suppliers Product Code: 14632

Reference Intake



Nutritional Information

Typical Values	Per 100g
Energy	1007kJ 238kCal
Carbohydrates	47.2g
of which sugars	3.1g
Fat	0.9g
of which saturates	0.2g
Fibre	3.4g
Protein	8.5g
Salt	0.7g

Allergy Information

Key: Contains May Contain

Contains Cereal/Gluten	Does Not Contain Milk	Does Not Contain Eggs	Does Not Contain Peanuts	Does Not Contain Nuts	Does Not Contain Crustaceans	Does Not Contain Mustard
Does Not Contain Fish	Does Not Contain Lupin	Does Not Contain Sesame	Does Not Contain Celery	May Contain Soya	Does Not Contain Molluscs	Does Not Contain Sulphur Dioxide

Dietary Information

Key: Suitable for

Suitable for Vegetarian	Suitable for Vegan	May not be suitable for Kosher	Suitable for Halal	NO DATA for Coeliac
-------------------------	--------------------	--------------------------------	--------------------	---------------------

Ingredients

Wheat Flour (with added calcium, niacin, iron, folic acid and thiamin), Water, Malted Wheat Flakes (9%), Yeast, Malted Barley, Salt, Buckwheat Flour, Emulsifier: E472e, E471, Preservative: Calcium Propionate (to inhibit mould growth), Rapeseed Oil, Flour Treatment Agent: Ascorbic Acid (Vitamin C)