

Supplier's Product Code :
Product Added :
Last Updated by Supplier :
erudus id :

FC491G
26 February 2019
20 April 2021
1933de0dee6b472b9c1ecb03b01b6e57



The information on the **Erudus System** has been supplied by the manufacturers of the products and, whilst the owners of the Erudus System take steps to ensure the information is regularly updated, they give no warranty and no guarantee that the information is accurate. Product information and ingredients may change, please always read product labels carefully in addition to using the information provided by Erudus One.

We do not accept liability for any inaccuracies or incorrect information contained on this site. Please visit <http://www.erudus.com/terms-and-conditions> for full terms and conditions.

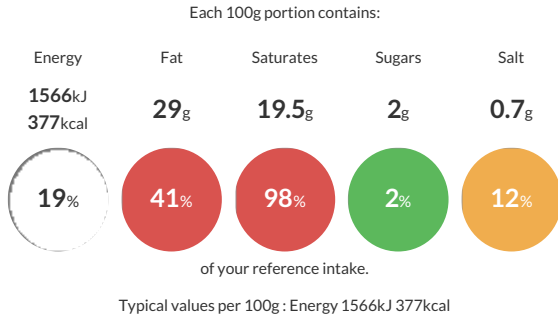
EMMENTAL GRATED VEG 2KG BAG

Short Product Name:

Vegetarian grated emmental

Traded Unit GTIN: Internal GTIN: Supplier: Cheese Cellar (H&B Foods) Suppliers Product Code: FC491G

Reference Intake



Nutritional Information

Typical Values	Per 100g
Energy	1566kJ 377kCal
Carbohydrates	2g
of which sugars	2g
Fat	29g
of which saturates	19.5g
Fibre	-g
Protein	27g
Salt	0.7g

Allergy Information

Key: Contains May Contain

Does Not Contain Cereal/Gluten	Contains Milk	Does Not Contain Eggs	Does Not Contain Peanuts	Does Not Contain Nuts	Does Not Contain Crustaceans	Does Not Contain Mustard
Does Not Contain Fish	Does Not Contain Lupin	Does Not Contain Sesame	Does Not Contain Celery	Does Not Contain Soya	Does Not Contain Molluscs	Does Not Contain Sulphur Dioxide

Gluten Claim

Gluten content is less than 20ppm.

Ingredients

Emmental (99%) contains [Pasteurised Cow's MILK(99.17%), Salt (0.6%), Lactic Starters Propionic (0.2%), Microbial Rennet (0.03%), Calcium Chloride (0.001%)]

Anti-Caking Agent (1%) [Potato Starch]

Dietary Information

Key: Suitable for

Suitable for Vegetarian	May not be suitable for Vegan	May not be suitable for Kosher	May not be suitable for Halal	Suitable for Coeliac
-------------------------	-------------------------------	--------------------------------	-------------------------------	----------------------