

The information on the [Erudus System](#) has been supplied by the manufacturers of the products and, whilst the owners of the Erudus System take steps to ensure the information is regularly updated, they give no warranty and no guarantee that the information is accurate. Product information and ingredients may change, please always read product labels carefully in addition to using the information provided by Erudus One.

We do not accept liability for any inaccuracies or incorrect information contained on this site. Please visit <http://www.erudus.com/terms-and-conditions> for full terms and conditions.

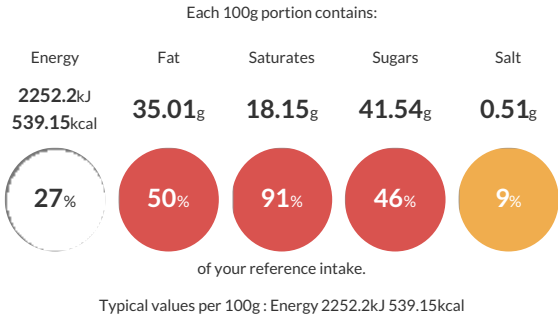
Tony's Chocolonely 51% Dark Almond Sea Salt 47g Fairtrade

Short Product Name:

This dark chocolate bar has got it all: almonds and sea salt. A golden match! Pass the salt please...

Traded Unit GTIN: **8717677339846** Internal GTIN: **8717677339853** Supplier : **Tony's Chocolonely** Suppliers Product Code : **UKBDAS47**

Reference Intake



Nutritional Information

Typical Values	Per 100g
Energy	2252.2kJ 539.15kCal
Carbohydrates	43.96g
of which sugars	41.54g
Fat	35.01g
of which saturates	18.15g
Fibre	-g
Protein	7.4g
Salt	0.51g

Allergy Information

Key: **Contains** **May Contain**


May Contain Cereal/Gluten


May Contain Milk


May Contain Eggs


May Contain Peanuts


Contains Nuts


Does Not Contain Crustaceans


Does Not Contain Mustard


Does Not Contain Fish


Does Not Contain Lupin


Does Not Contain Sesame


Does Not Contain Celery


Contains Soya


Does Not Contain Molluscs


Does Not Contain Sulphur Dioxide

Dietary Information

Key: **Suitable for**


Suitable for Vegetarian


Suitable for Vegan


May not be suitable for Kosher


May not be suitable for Halal


May not be suitable for Coeliac

Allergen Statement
May contain traces of gluten, egg, peanut, cow's milk and nuts.Suitable for vegetarians, suitable for vegans.

Ingredients

cocoa mass, sugar, 10.00% **ALMONDS**, cocoa butter, 0.50% sea salt, emulsifier (**SOYA** lecithin)