

Supplier's Product Code :
Product Added :
Last Updated by Supplier :
erudus id :

SW00080 – ECLS/6
03 April 2024
03 April 2024
1a23b3659c0f4d43b320b2aec4963b8e



The information on the Erudus System has been supplied by the manufacturers of the products and, whilst the owners of the Erudus System take steps to ensure the information is regularly updated, they give no warranty and no guarantee that the information is accurate. Product information and ingredients may change, please always read product labels carefully in addition to using the information provided by Erudus One.

We do not accept liability for any inaccuracies or incorrect information contained on this site. Please visit <http://www.erudus.com/terms-and-conditions> for full terms and conditions.

Lamb Stock Mix 700g

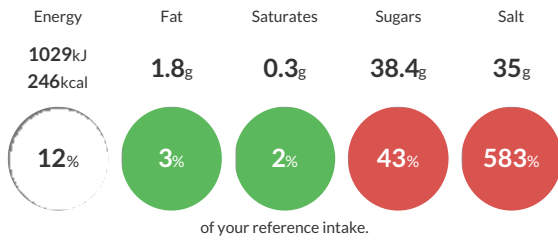
Short Product Name:
Lamb Stock Mix

A composite material produced by the dry blending of food ingredients. A fine, light brown coloured free-flowing powder, with a distinctive odour of lamb. It has the characteristic appearance and flavour of Lamb Stock when reconstituted with water.

Traded Unit GTIN: 05029540000689 Internal GTIN: 5029540000139 Supplier: Essential Cuisine Limited Suppliers Product Code: SW00080 – ECLS/6

Reference Intake

Each 100g portion contains:



Typical values per 100g : Energy 1029kJ 246kcal

Nutritional Information

Typical Values	Per 100g
Energy	1029kJ 246kCal
Carbohydrates	43.8g
of which sugars	38.4g
Fat	1.8g
of which saturates	0.3g
Fibre	0.3g
Protein	13.7g
Salt	35g

Allergy Information

Key: Contains May Contain



Gluten Claim

Gluten content is less than 20ppm.

Ingredients

Ingredients when reconstituted:

Lamb Stock (Water, Lamb, Garlic, Onion, Tomato, Herb Extract), Glucose Syrup, Salt, Yeast Extracts, Flavourings, Sugar, Rapeseed Oil.

Dietary Information

Key: Suitable for

