

Supplier's Product Code :  
Product Added :  
Last Updated by Supplier :  
erudus id :

ECBS/5n - SW00032  
18 February 2026  
18 February 2026  
1b9c5f5e3d4c4cb18b5d7a72ab1ff9a6



The information on the [Erudus System](#) has been supplied by the manufacturers of the products and, whilst the owners of the Erudus System take steps to ensure the information is regularly updated, they give no warranty and no guarantee that the information is accurate. Product information and ingredients may change, please always read product labels carefully in addition to using the information provided by Erudus One.

We do not accept liability for any inaccuracies or incorrect information contained on this site. Please visit <http://www.erudus.com/terms-and-conditions> for full terms and conditions.

## Beef Stock Mix 800g

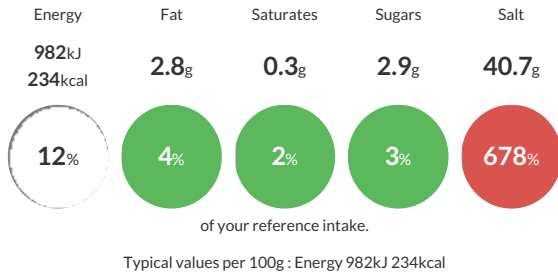
Short Product Name:  
Beef Stock Mix

A composite material produced by the dry blending of food ingredients. A fine, darkish brown coloured free-flowing speckled powder, with a distinctive odour of beef. It has the characteristic appearance and flavour of Beef Stock when reconstituted with water.

Traded Unit GTIN: **05029540000665** Internal GTIN: **5029540000054** Supplier: **Essential Cuisine Limited** Suppliers Product Code: **ECBS/5n - SW00032**

### Reference Intake

Each 100g portion contains:



### Nutritional Information

Typical Values	Per 100g
Energy	982kJ 234kCal
Carbohydrates	37g
of which sugars	2.9g
Fat	2.8g
of which saturates	0.3g
Fibre	0.5g
Protein	14.8g
Salt	40.7g

### Allergy Information

Key: **Contains** **May Contain**



### Dietary Information

Key: **Suitable for**



#### Gluten Claim

Gluten content is less than 20ppm.

### Ingredients

Ingredients when reconstituted:

Beef Stock (Water, Beef Stock, Onion, Tomato, Carrot Extract, Herbs, Spice, Garlic), Salt, Glucose Syrup, Flavourings, Maltodextrin, Yeast Extracts, Rapeseed Oil, Colour (Caramel), Sugar.