

The information on the [Erudus System](#) has been supplied by the manufacturers of the products and, whilst the owners of the Erudus System take steps to ensure the information is regularly updated, they give no warranty and no guarantee that the information is accurate. Product information and ingredients may change, please always read product labels carefully in addition to using the information provided by Erudus One.

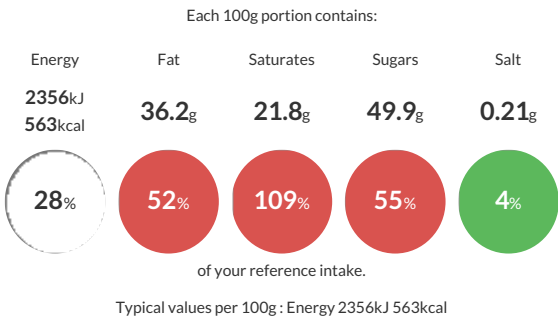
We do not accept liability for any inaccuracies or incorrect information contained on this site. Please visit <http://www.erudus.com/terms-and-conditions> for full terms and conditions.

COUVERTURE MILK CHOCOLATE

Short Product Name:  
COUVERTURE MILK CHOCOLATE 2.5kg  
  
FINEST BELGIAN MILK COUVERTURE CHOCOLATE

Traded Unit GTIN: 5410522513523 Internal GTIN: 5410522513530 Supplier : Barry Callebaut Belgium NV & IBC Belgium Suppliers Product Code : 823-E4-U71

Reference Intake



Nutritional Information

Typical Values	Per 100g
Energy	2356kJ 563kCal
Carbohydrates	50.9g
of which sugars	49.9g
Fat	36.2g
of which saturates	21.8g
Fibre	2.1g
Protein	7g
Salt	0.21g

Allergy Information

Key: Contains May Contain

  
Does Not Contain Cereal/Gluten

  
Contains Milk


  
Does Not Contain Eggs

  
Does Not Contain Peanuts


  
Does Not Contain Nuts


  
Does Not Contain Crustaceans


  
Does Not Contain Mustard

  
Does Not Contain Fish

  
Does Not Contain Lupin

  
Does Not Contain Sesame

  
Does Not Contain Celery


  
Contains Soya


  
Does Not Contain Molluscs


  
Does Not Contain Sulphur Dioxide


Dietary Information


Key: Suitable for

  
Suitable for Vegetarian

  
May not be suitable for Vegan

  
Suitable for Kosher

  
Suitable for Halal

  
NO DATA for Coeliac

Ingredients

Cocoa Mass 11.0%,Sugar 42.0%,Cocoa butter 24.0%,Whole MILK powder 22.5%,Emulsifier SOYA lecithin <1%,Natural vanilla Flavouring <1%