

The information on the [Erudus System](#) has been supplied by the manufacturers of the products and, whilst the owners of the Erudus System take steps to ensure the information is regularly updated, they give no warranty and no guarantee that the information is accurate. Product information and ingredients may change, please always read product labels carefully in addition to using the information provided by Erudus One.

We do not accept liability for any inaccuracies or incorrect information contained on this site. Please visit <http://www.erudus.com/terms-and-conditions> for full terms and conditions.

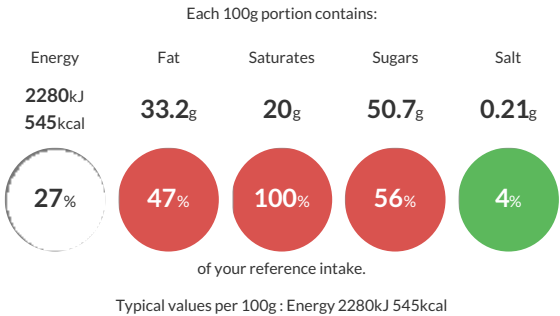
Tony's Chocolonely Milk Chocolate 50g Fairtrade

Short Product Name:

Not just a classic milk chocolate bar, but our classic chocolate bar. It was the first bar we ever made, back in 2005. We gave it a screaming red wrapper to attract attention to our main mission - 100% slave free chocolate.

Traded Unit GTIN: 8717677339785 **Internal GTIN:** 8717677339792 **Supplier :** Tony's Chocolonely **Suppliers Product Code :** UKBM50

Reference Intake



Nutritional Information

Typical Values	Per 100g
Energy	2280kJ 545kCal
Carbohydrates	51.9g
of which sugars	50.7g
Fat	33.2g
of which saturates	20g
Fibre	-g
Protein	7.7g
Salt	0.21g

Allergy Information

Key: Contains May Contain


May Contain Cereal/Gluten


Contains Milk


May Contain Eggs


May Contain Peanuts


May Contain Nuts


Does Not Contain Crustaceans


Does Not Contain Mustard


Does Not Contain Fish


Does Not Contain Lupin


Does Not Contain Sesame


Does Not Contain Celery


Contains Soya


Does Not Contain Molluscs


Does Not Contain Sulphur Dioxide

Dietary Information

Key: Suitable for


Suitable for Vegetarian


May not be suitable for Vegan


May not be suitable for Kosher


May not be suitable for Halal


May not be suitable for Coeliac

Allergen Statement
May contain traces of gluten, egg, peanut and nuts. Suitable for vegetarians, not suitable for vegans.

Ingredients

sugar, dried whole **MILK**, cocoa butter, cocoa mass, emulsifier (**SOYA** lecithin)